



## INSTALLATION GUIDE

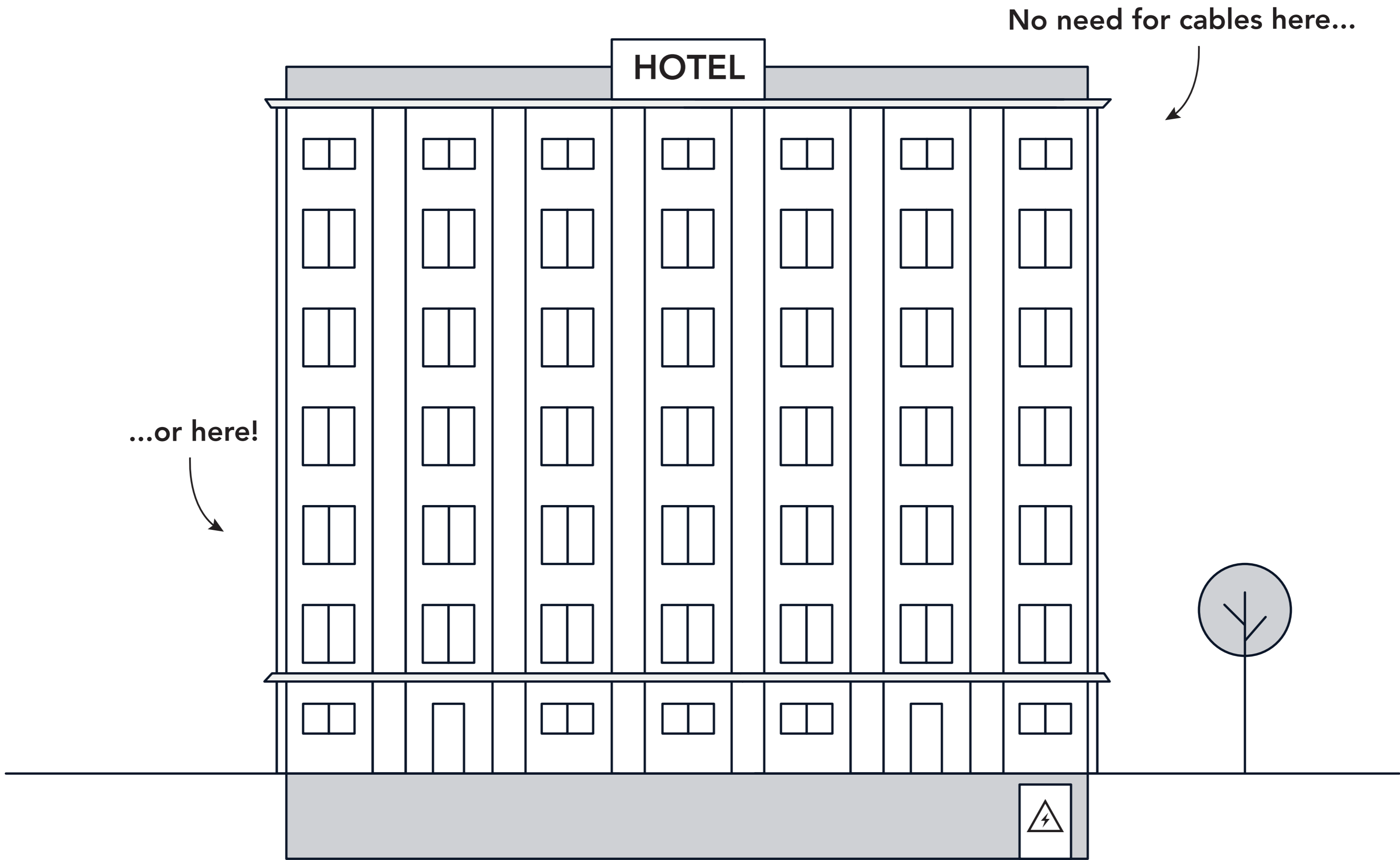
# Connect your building automation system with wireless Modbus



14 rue Edouard Petit  
42000 St-Etienne

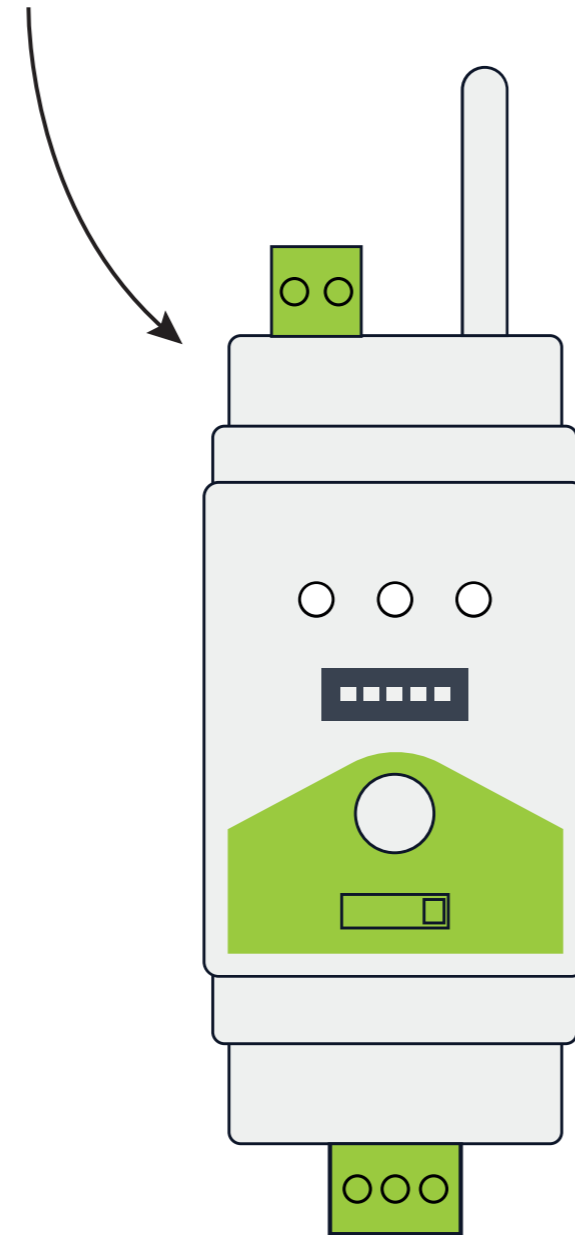
Tel : +33 477 92 03 56  
Email : [contact@rg2i.com](mailto:contact@rg2i.com)

[www.rg2i.com](http://www.rg2i.com)

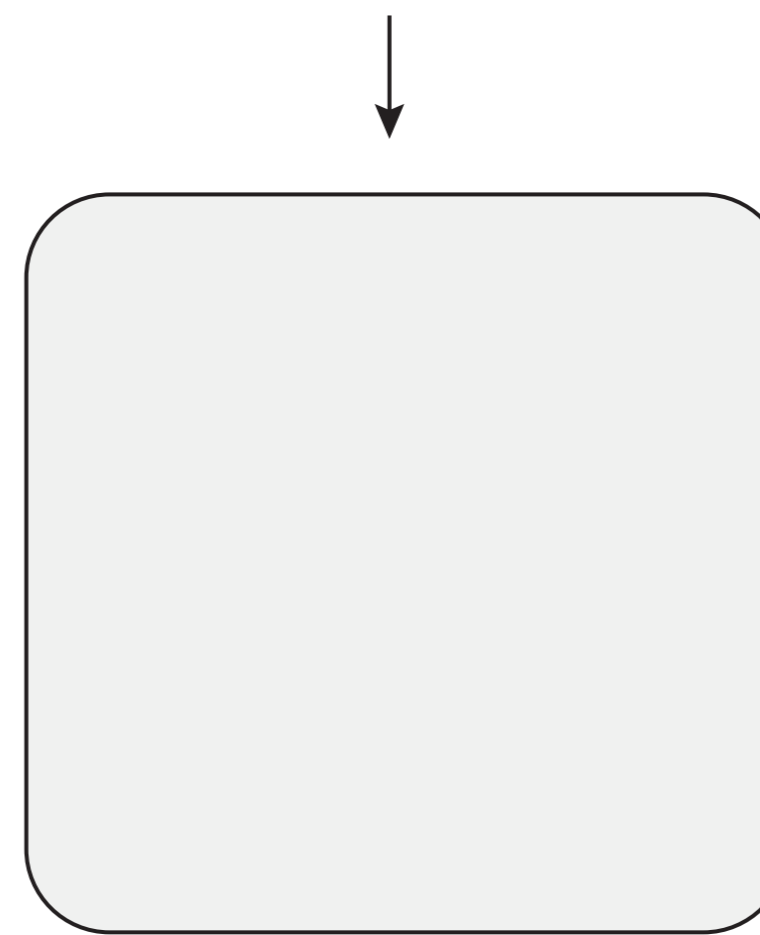


**For installation, no Modbus cables are needed.**

W-Modbus DIN rail

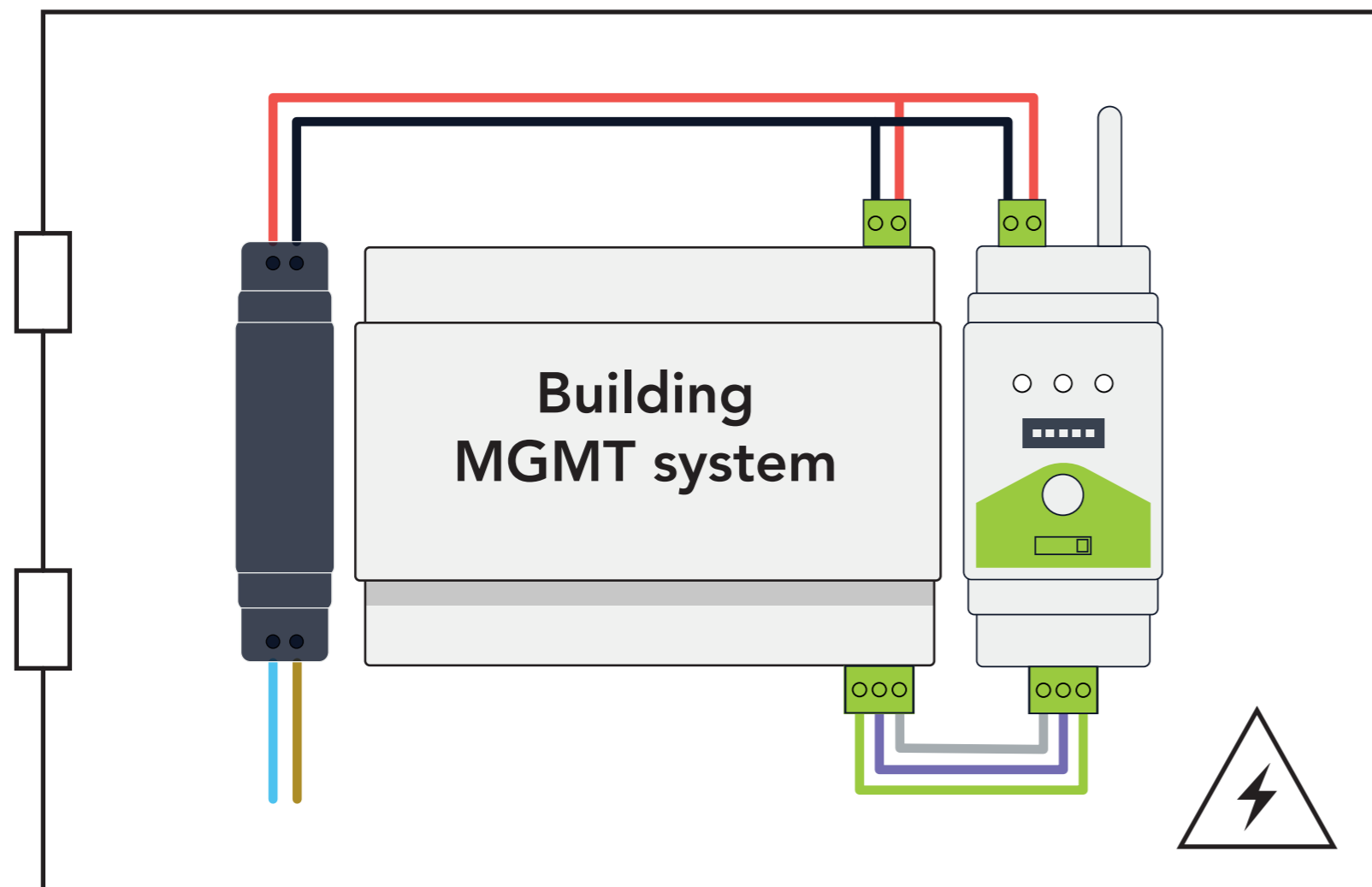


W-Modbus wall mount

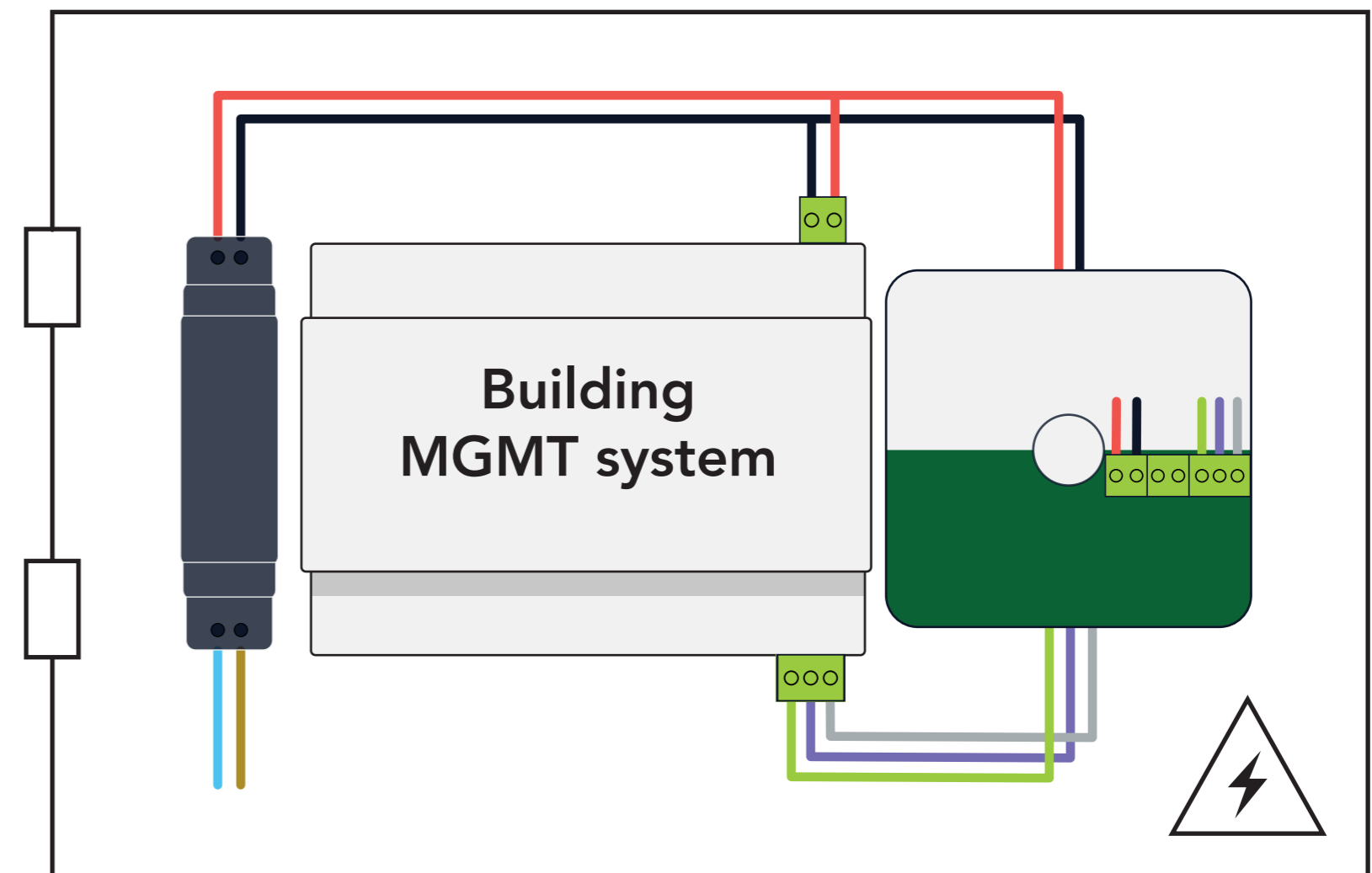


**You need this for installation. Choose either W-Modbus DIN rail or W-Modbus wall mount.**

A. DIN rail



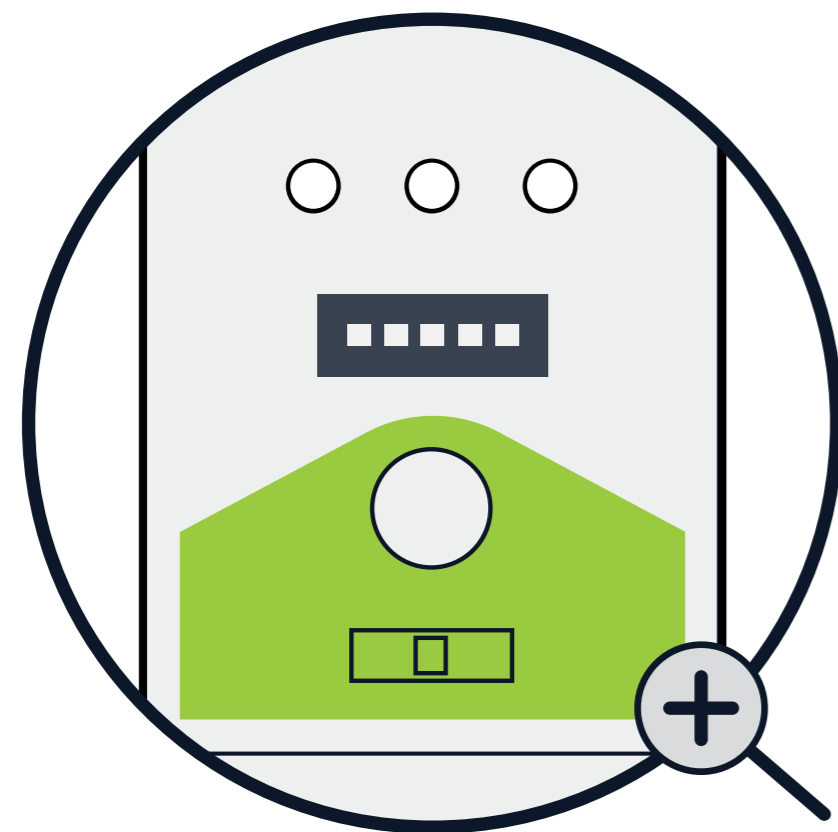
B. wall mount



**The LumenRadio device next to the Modbus master (client) can serve as your gateway, with both DIN rail and wall mount options available.**

# GATEWAY SET-UP

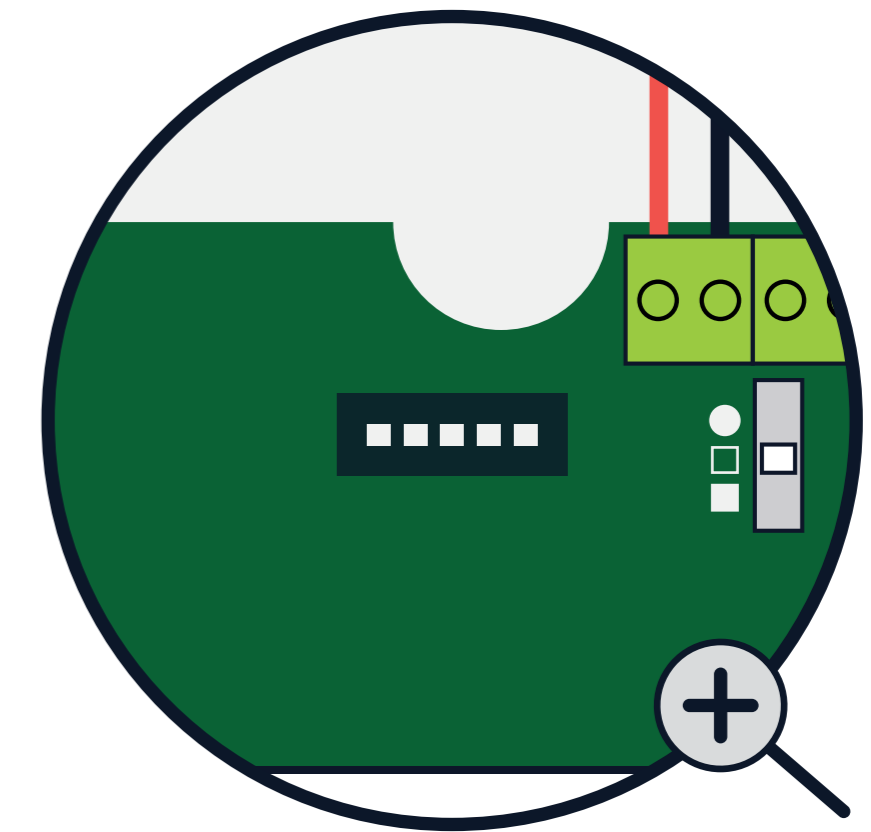
## A. DIN rail



	1	2	3	4	5
9600 baud	OFF	OFF	-	-	-
19200 baud	OFF	ON	-	-	-
38400 baud	ON	OFF	-	-	-
76800 baud	ON	ON	-	-	-
No parity	-	-	OFF	-	-
Even parity	-	-	ON	-	-
1 stop bit	-	-	-	OFF	-
2 stop bit	-	-	-	ON	-
Use local serial configuration set on Node					ON
Use Gateway serial configuration on Node					OFF

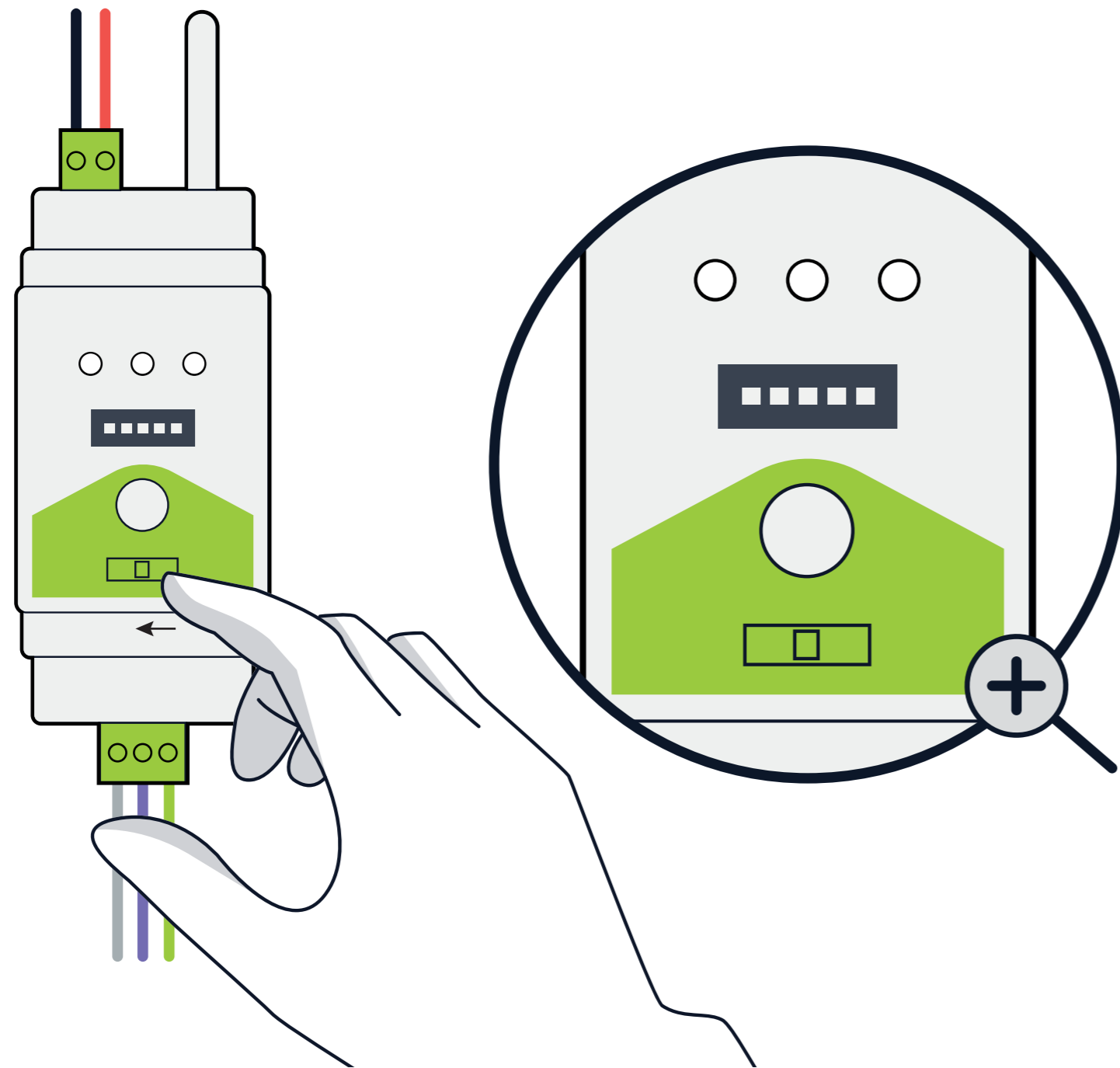


## B. wall mount

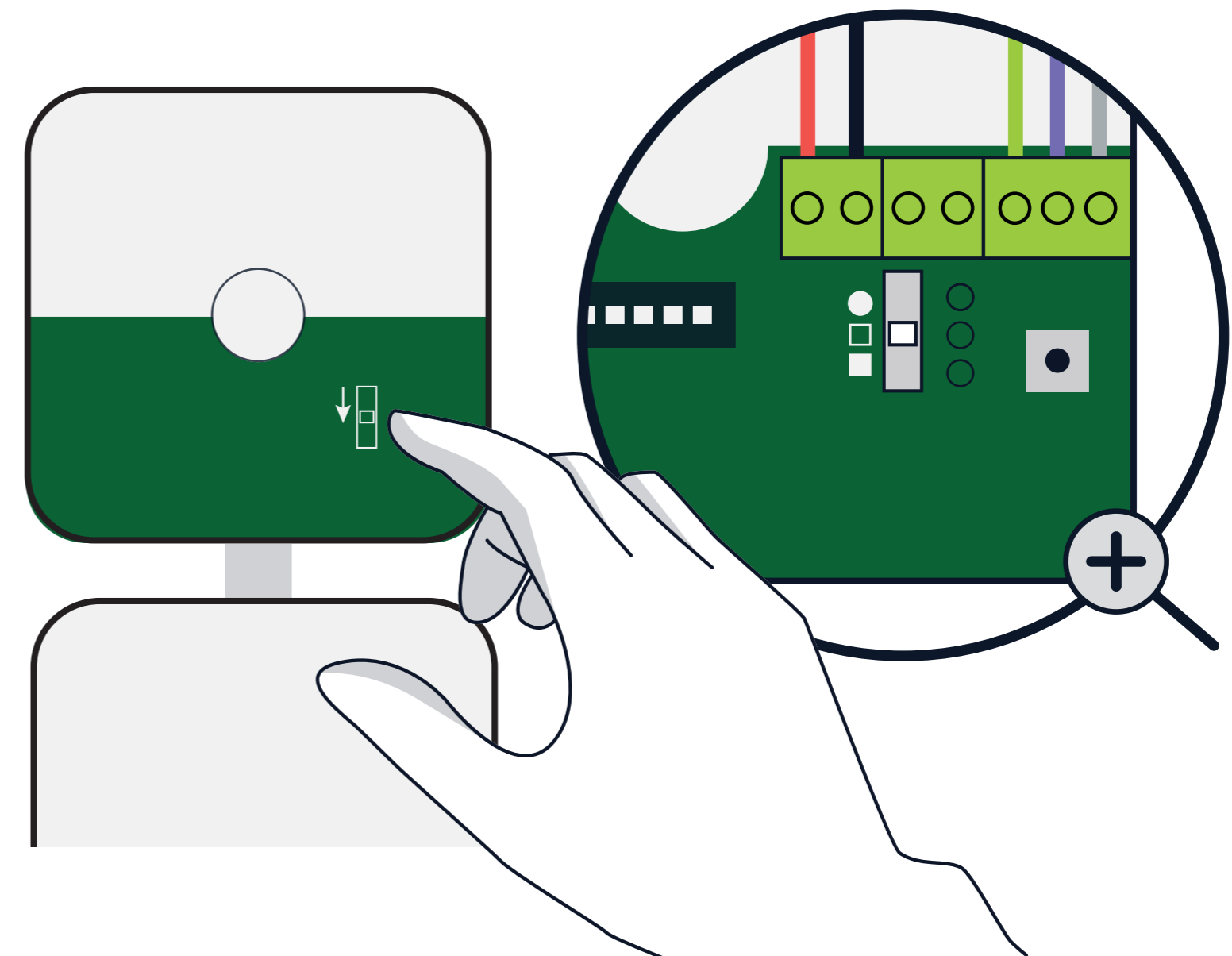


Set your Baud rate, stop bit and parity on the gateway (A or B).

A. DIN rail

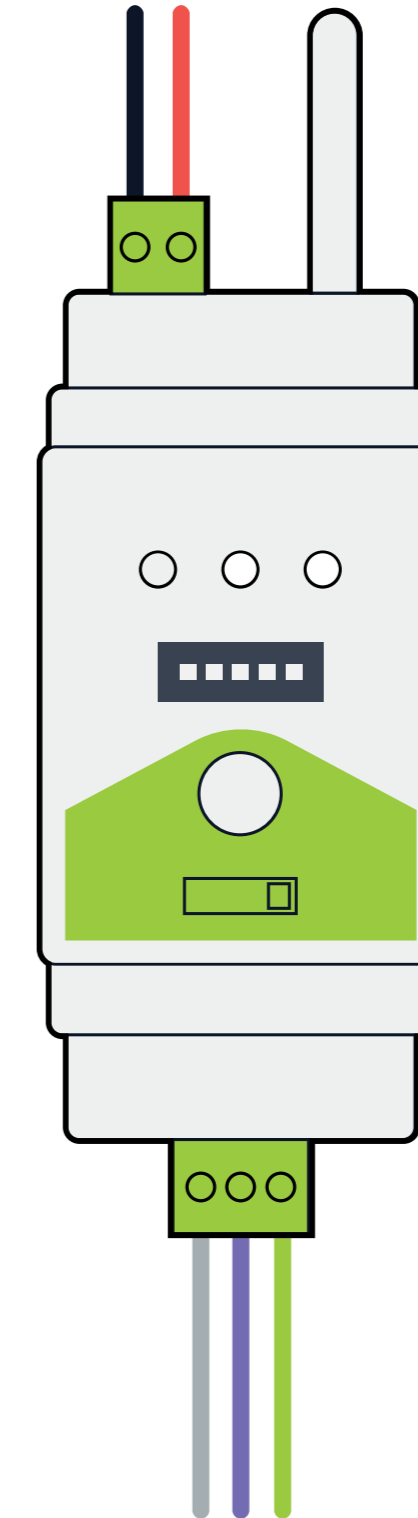
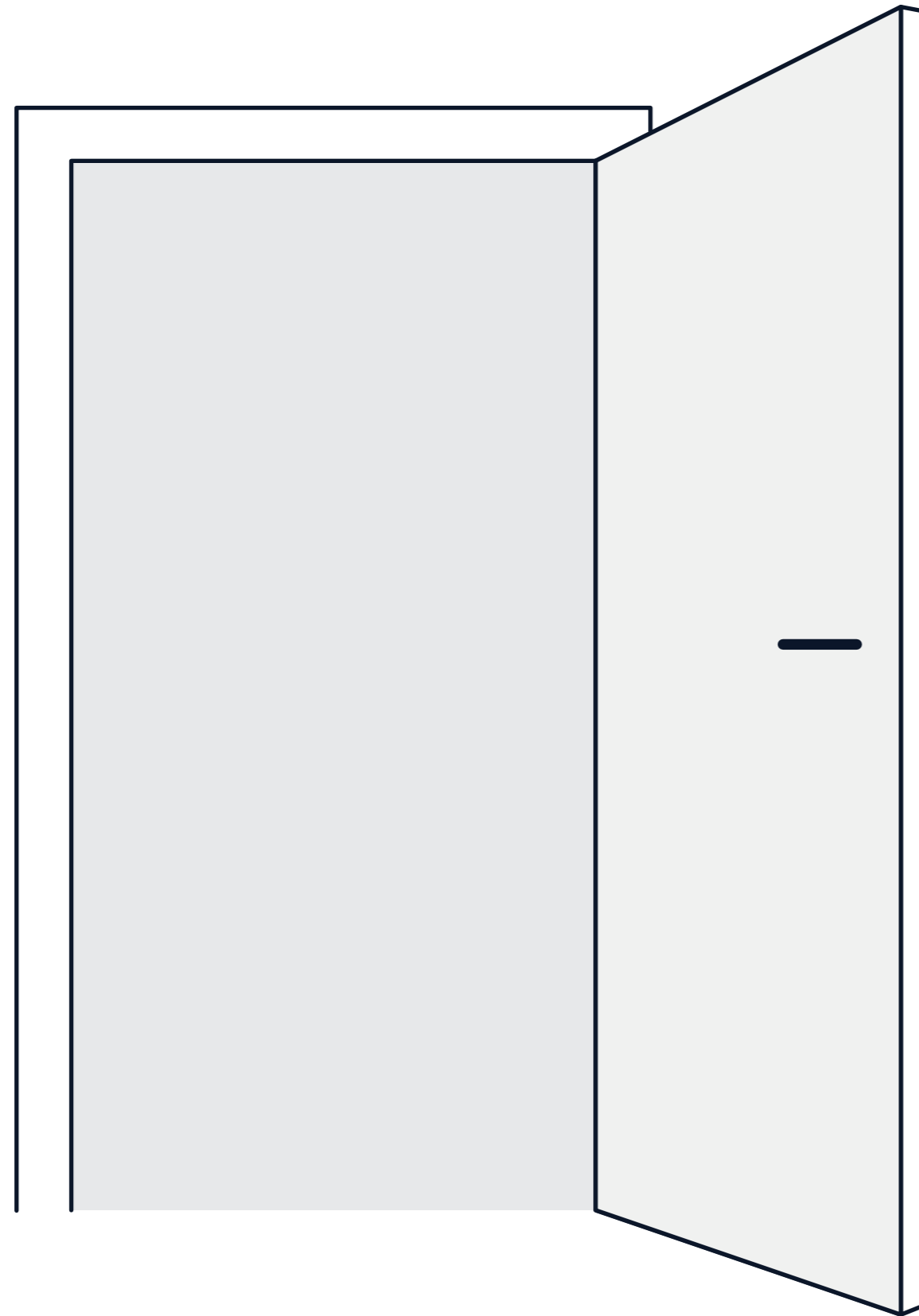
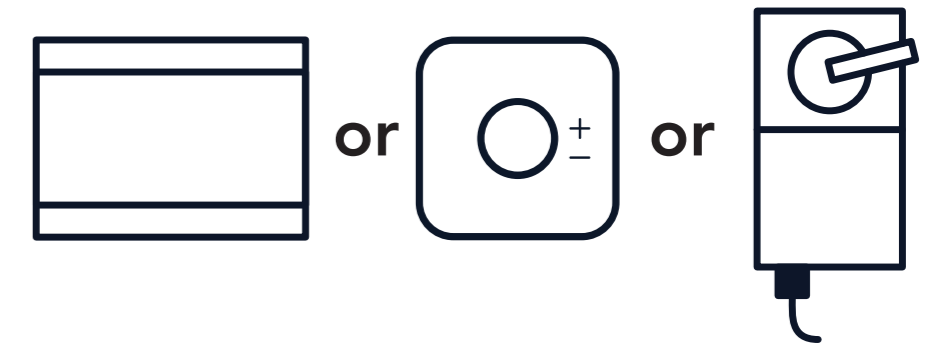


B. wall mount



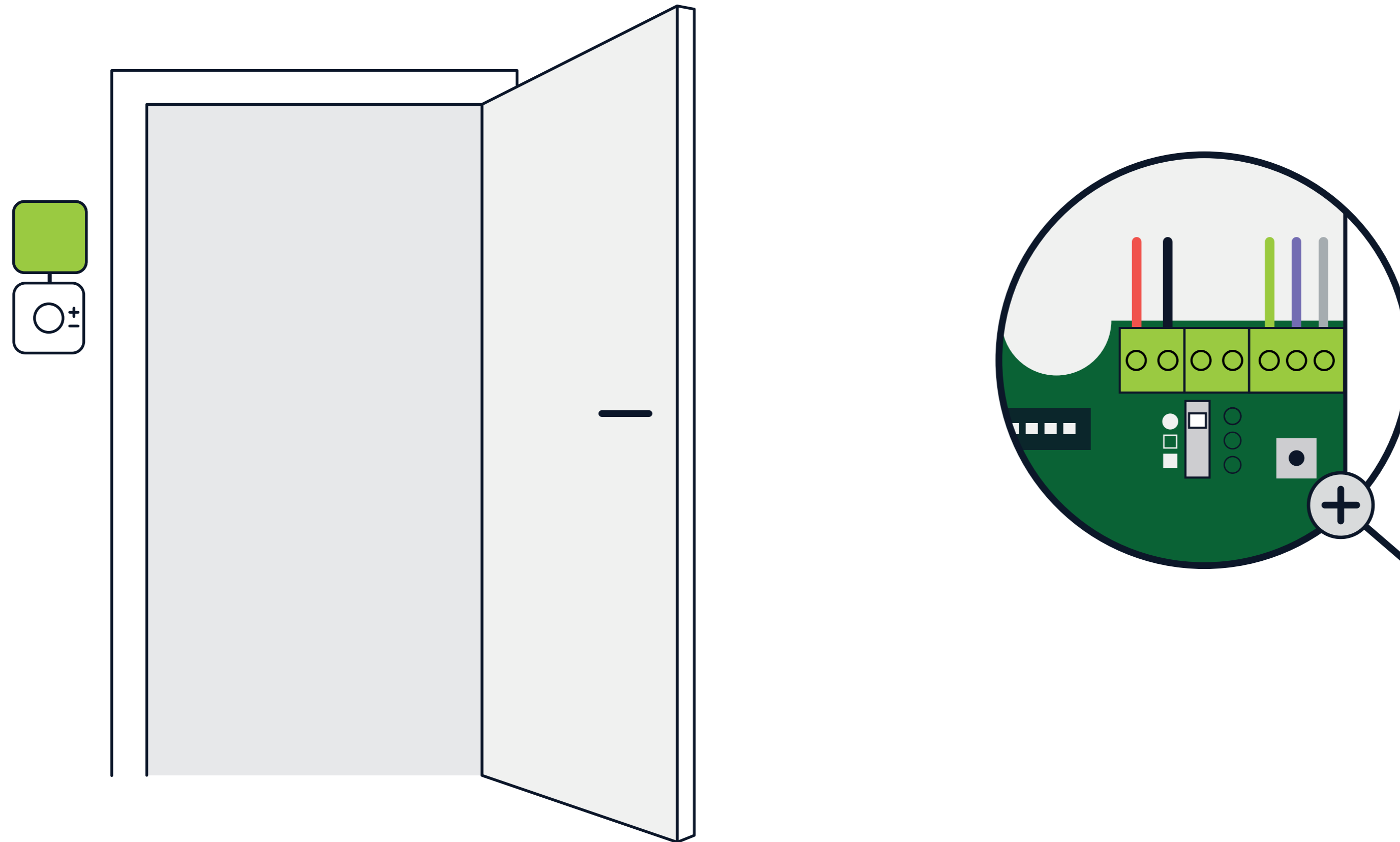
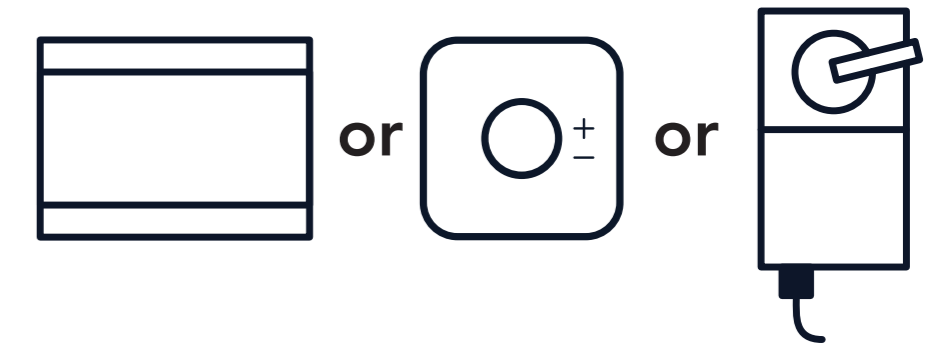
A - Move the switch to "COMM" or B - Move the switch to "".  
Continue by installing the LumenRadio node next to your field devices, starting with the one closest to your gateway.

Ex. Node to zone controller



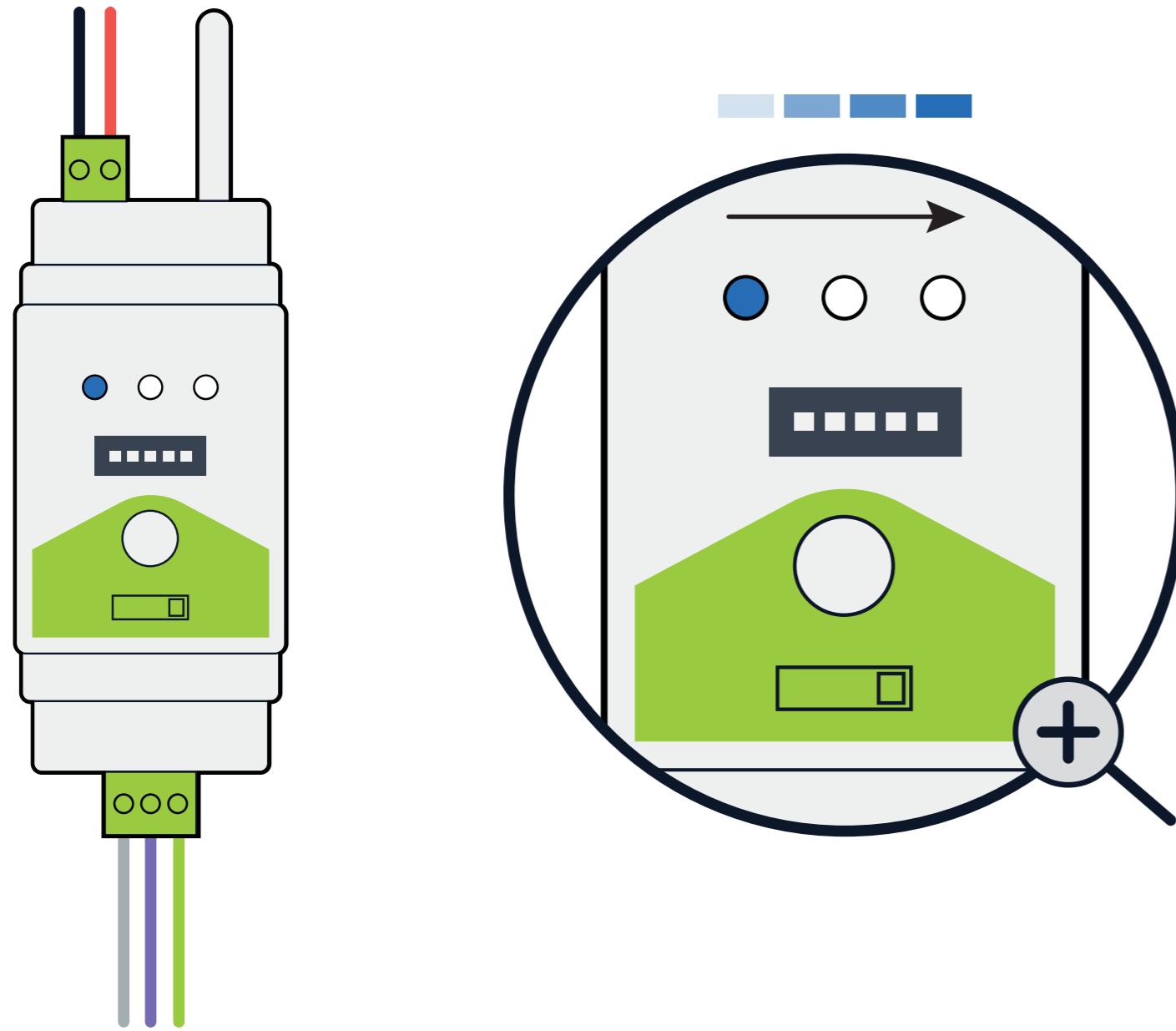
**Connect the LumenRadio device with chosen device (zone controller). Optionally, set a local Baud rate.**

Ex. Node to room controller

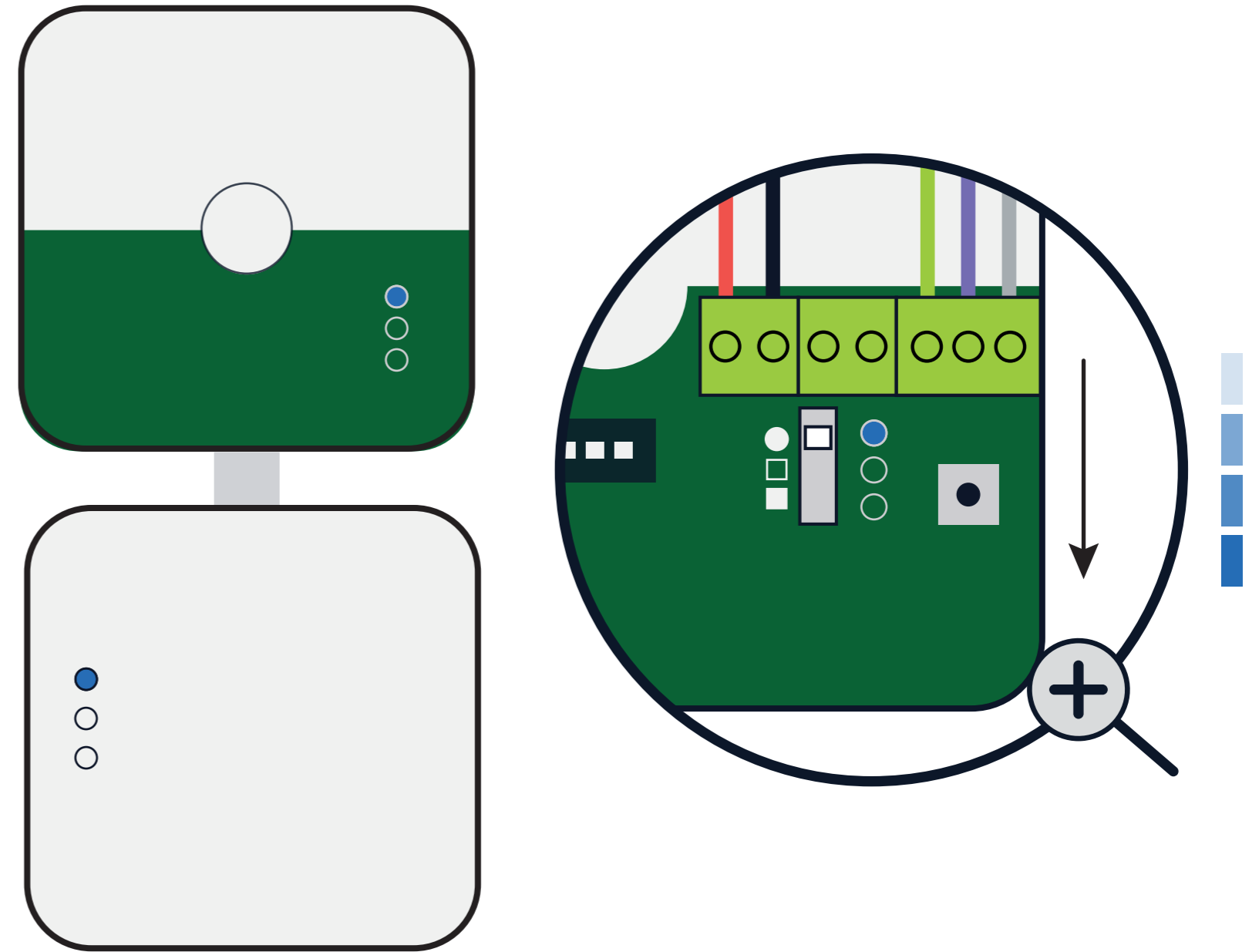


Place the LumenRadio device preferably above the chosen device (room controller) and connect. Optionally, set a local Baud rate.

A. DIN rail

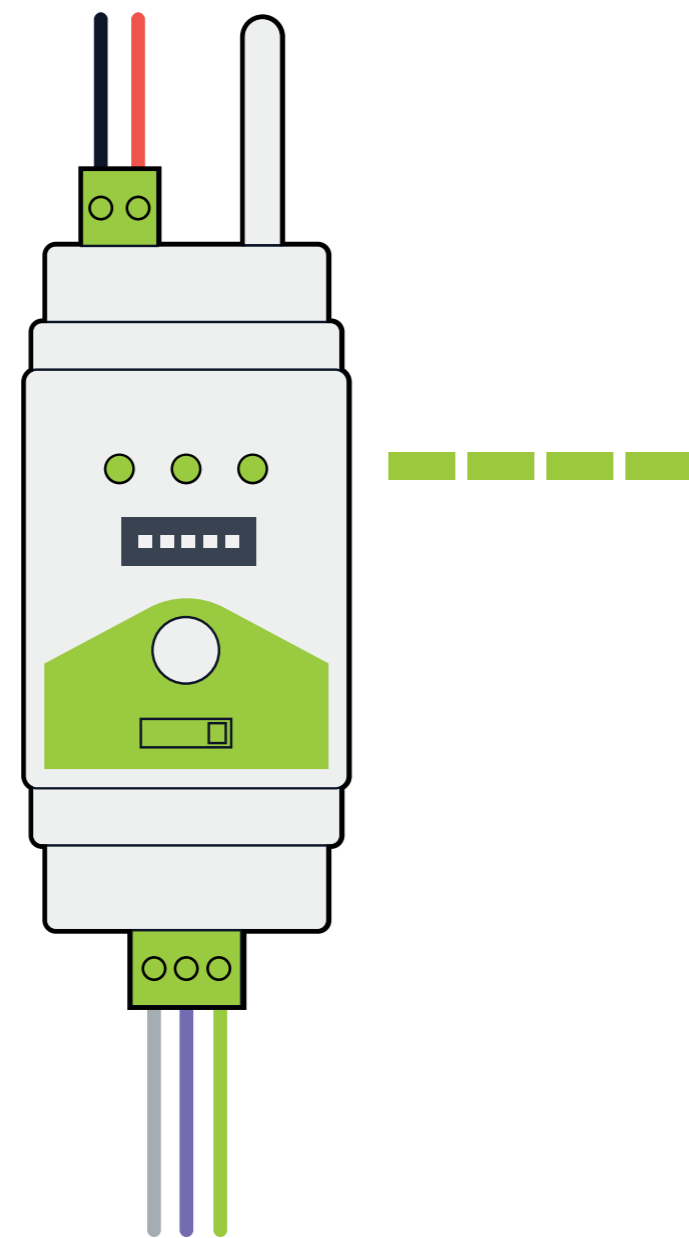


B. wall mount

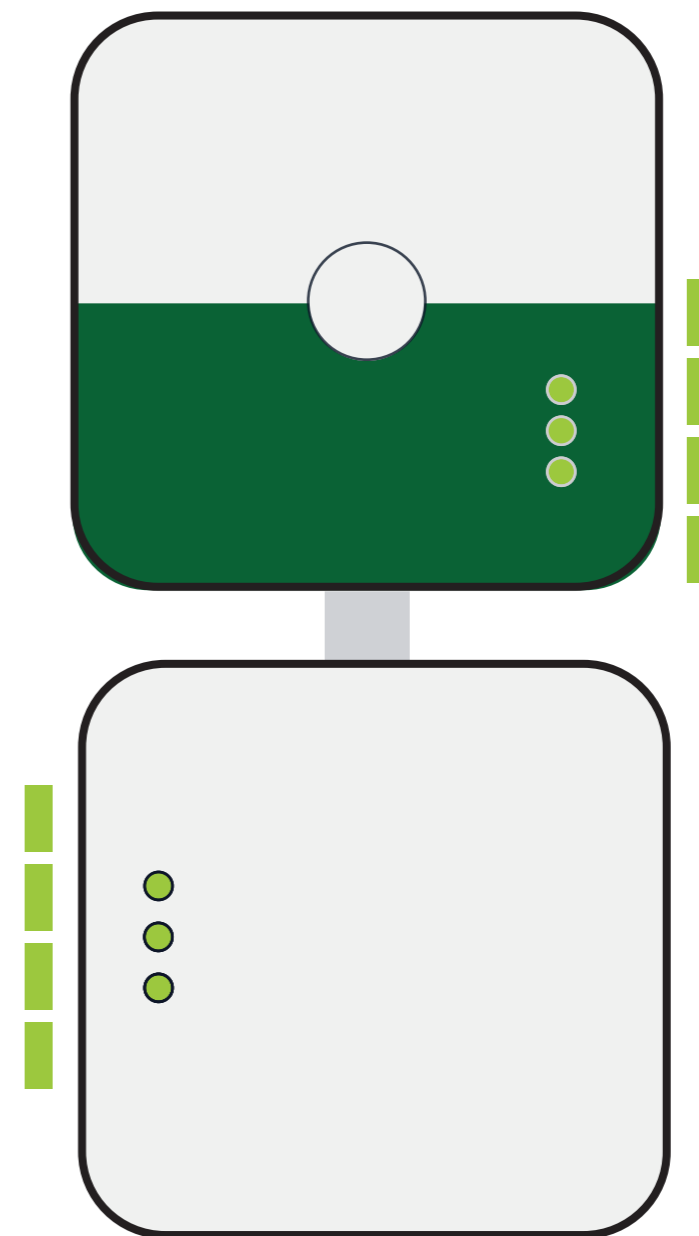


The lights on your node will now sweep in blue.

**A. DIN rail**

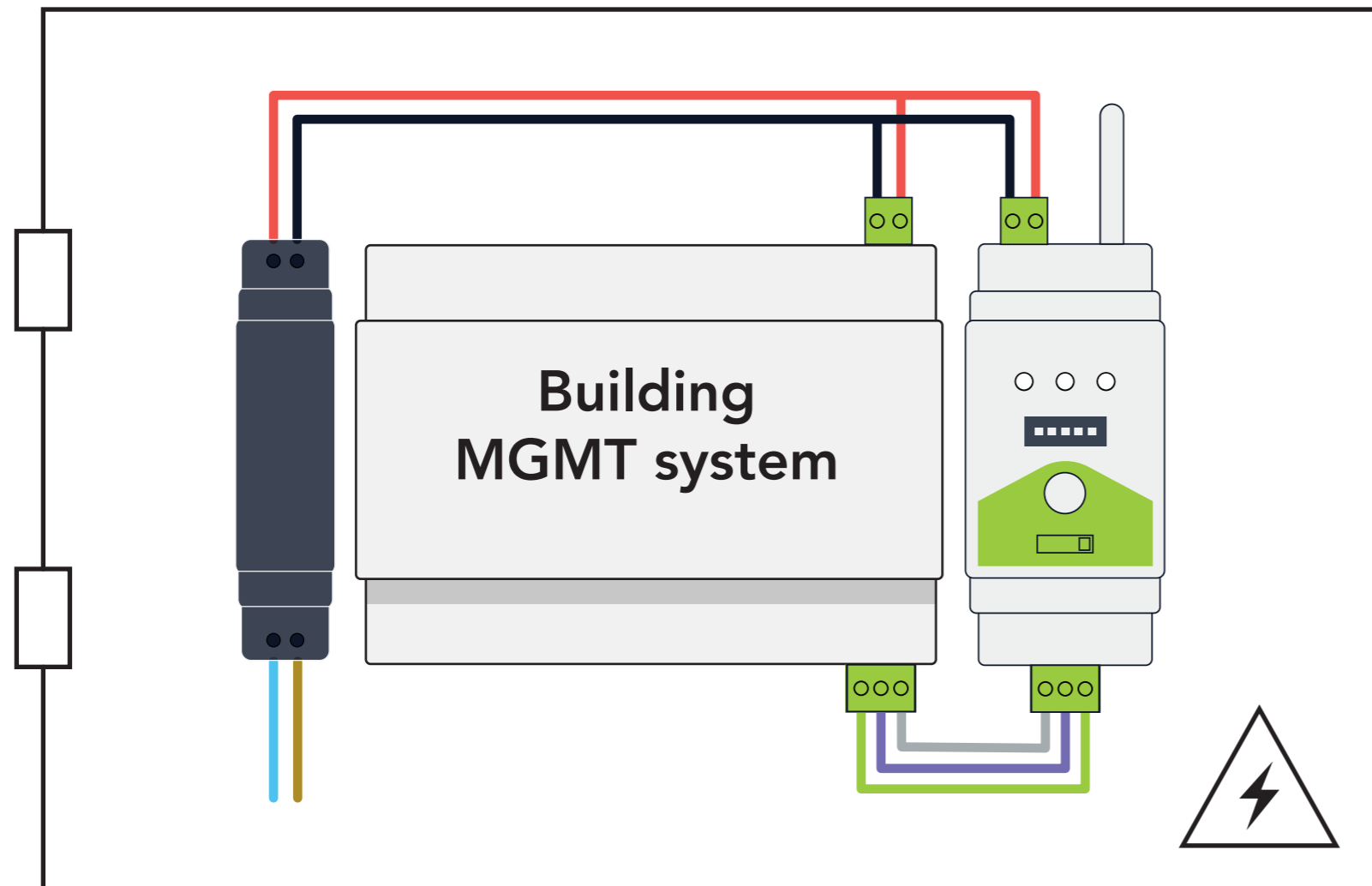


**B. wall mount**

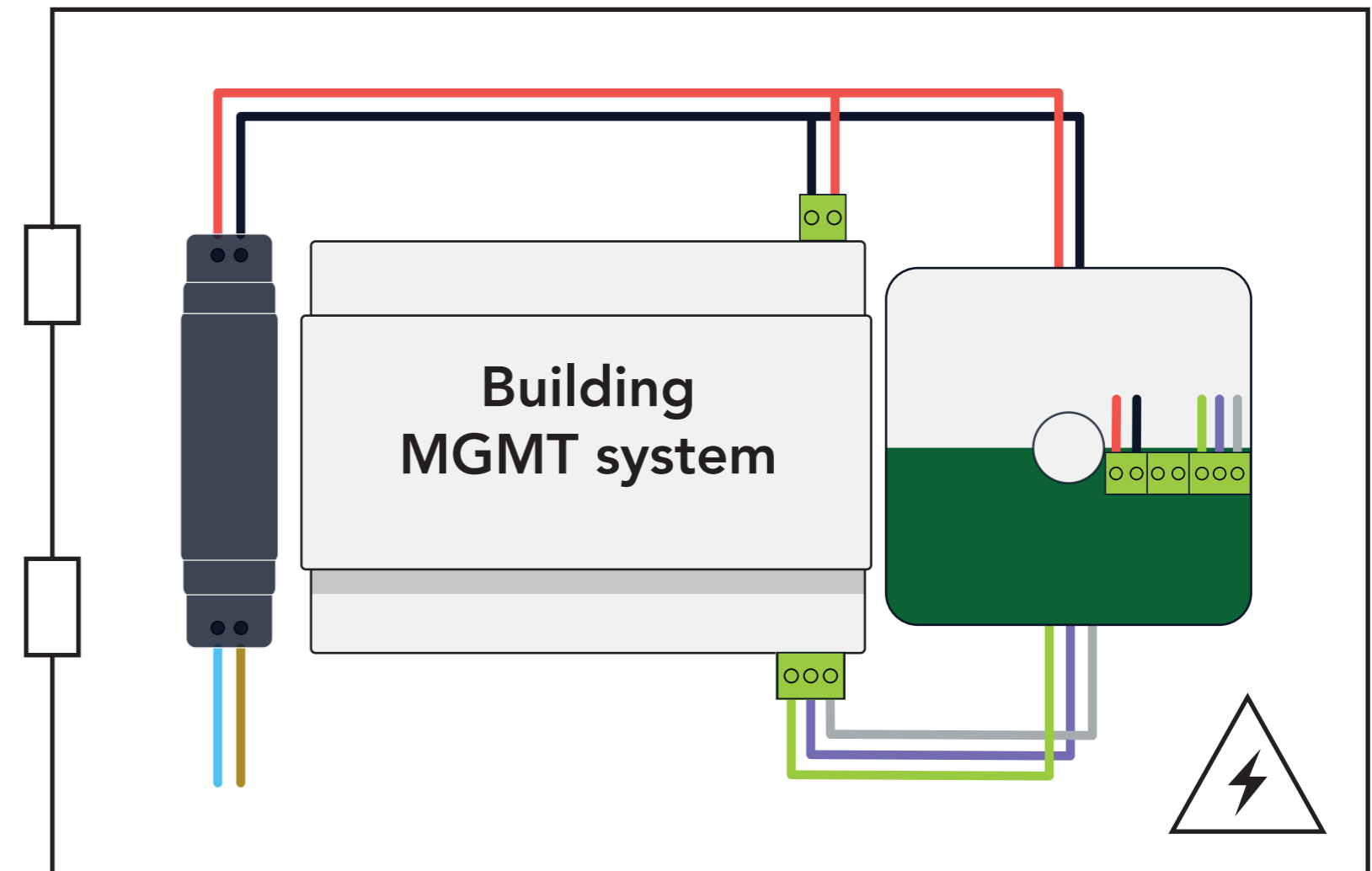


**When the lights start blinking green, the node has found the gateway. This can take up to five minutes.**

**A. DIN rail**

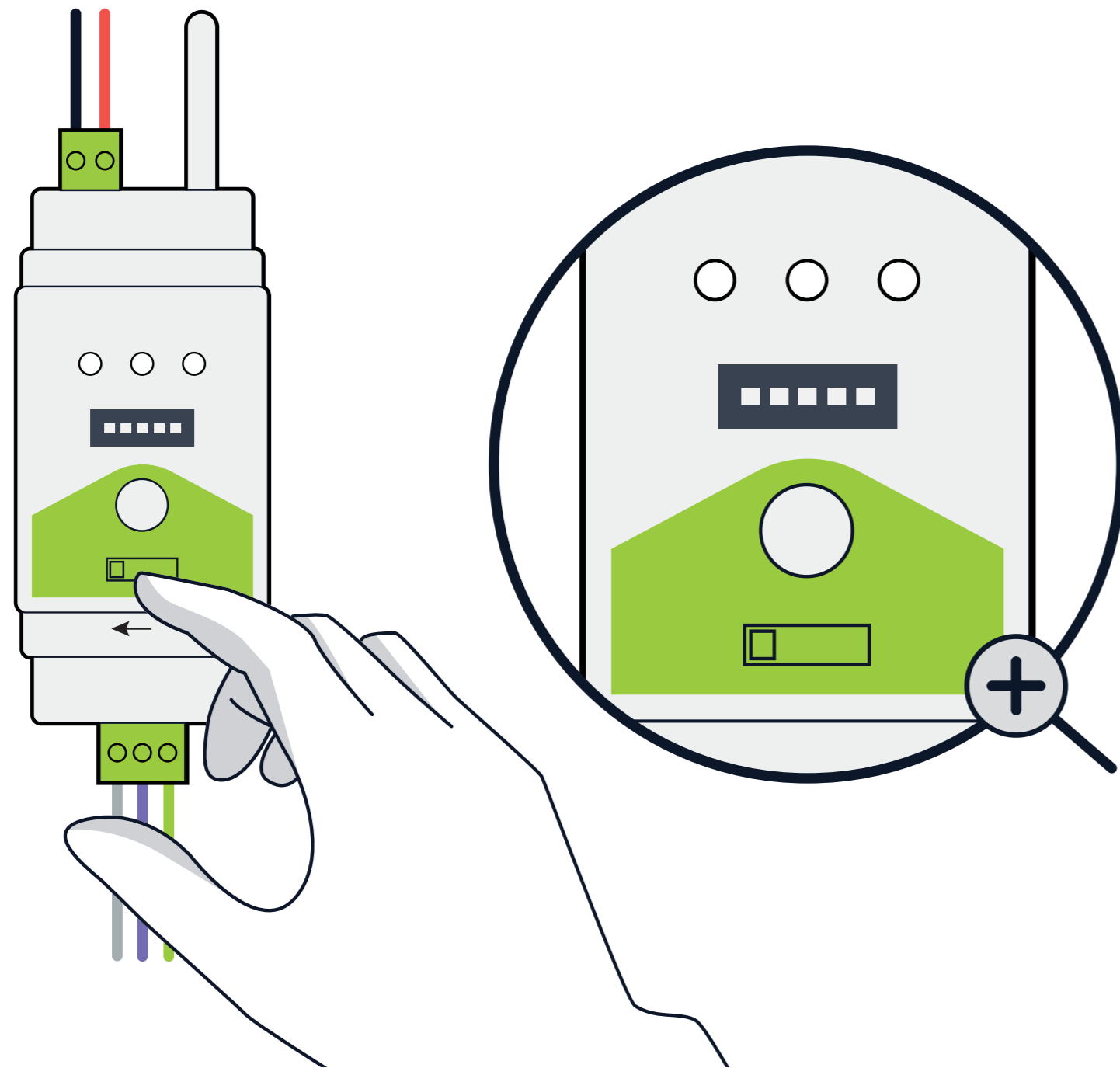


**B. wall mount**

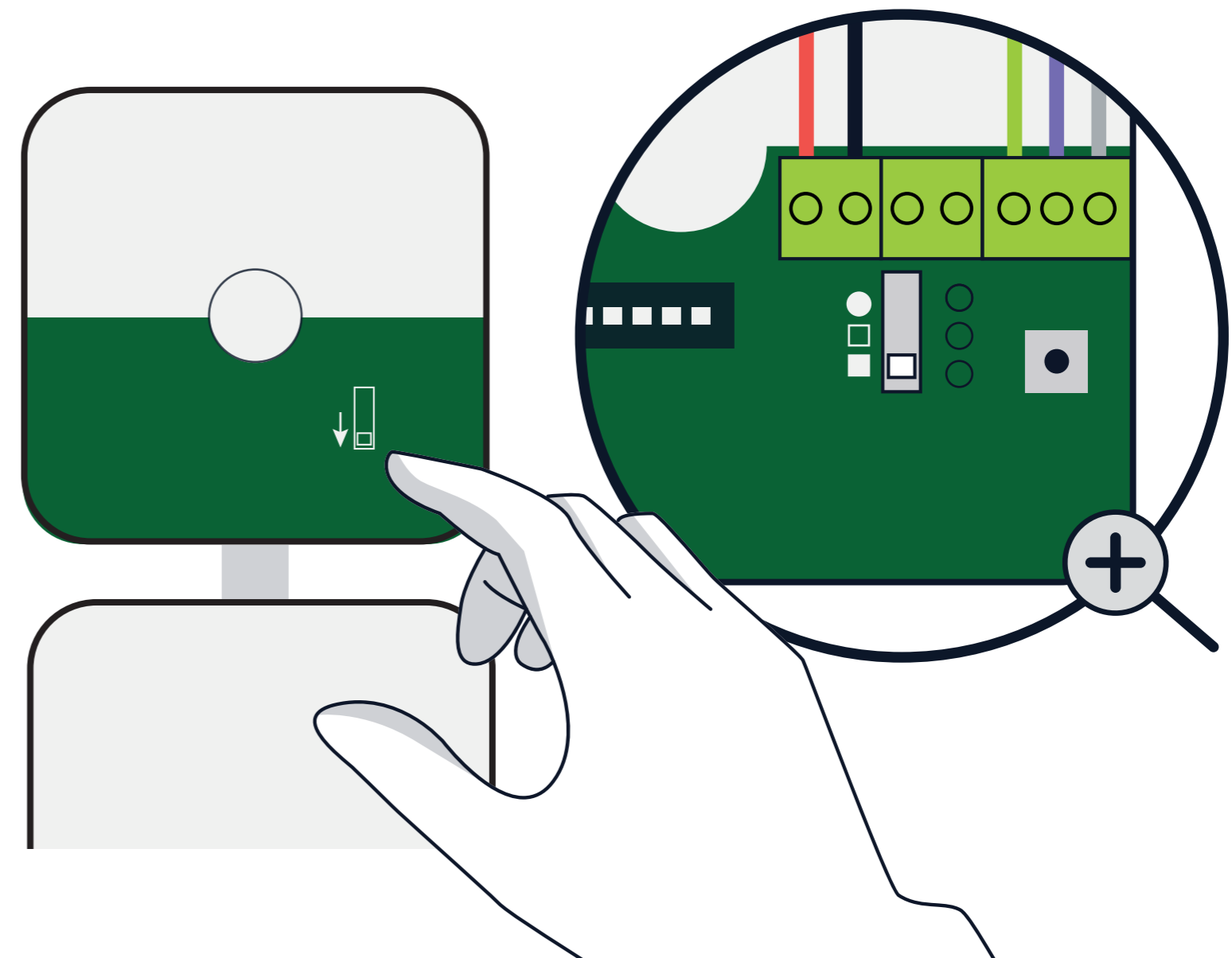


**Go back to the gateway.**

**A. DIN rail**

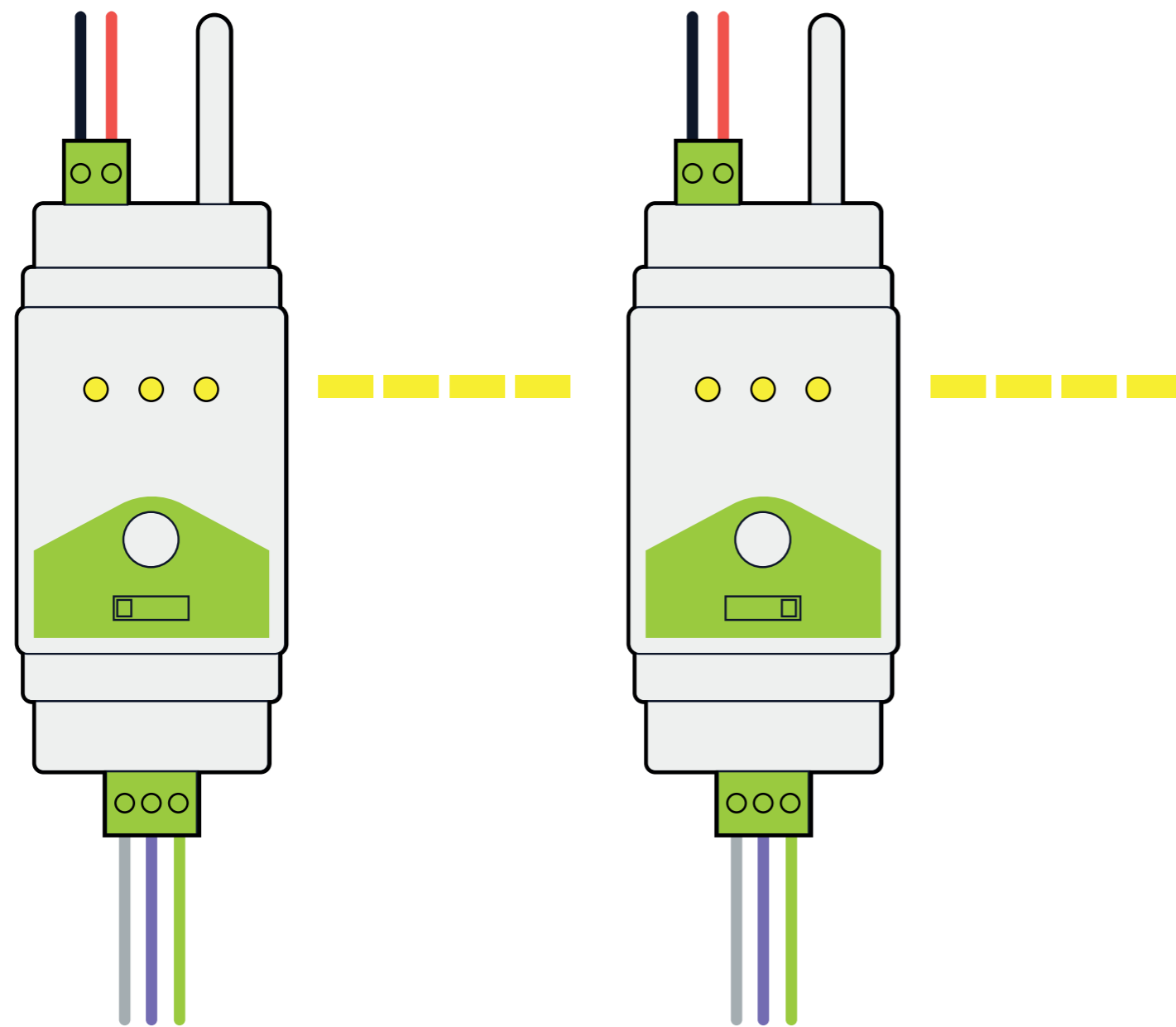


**B. wall mount**

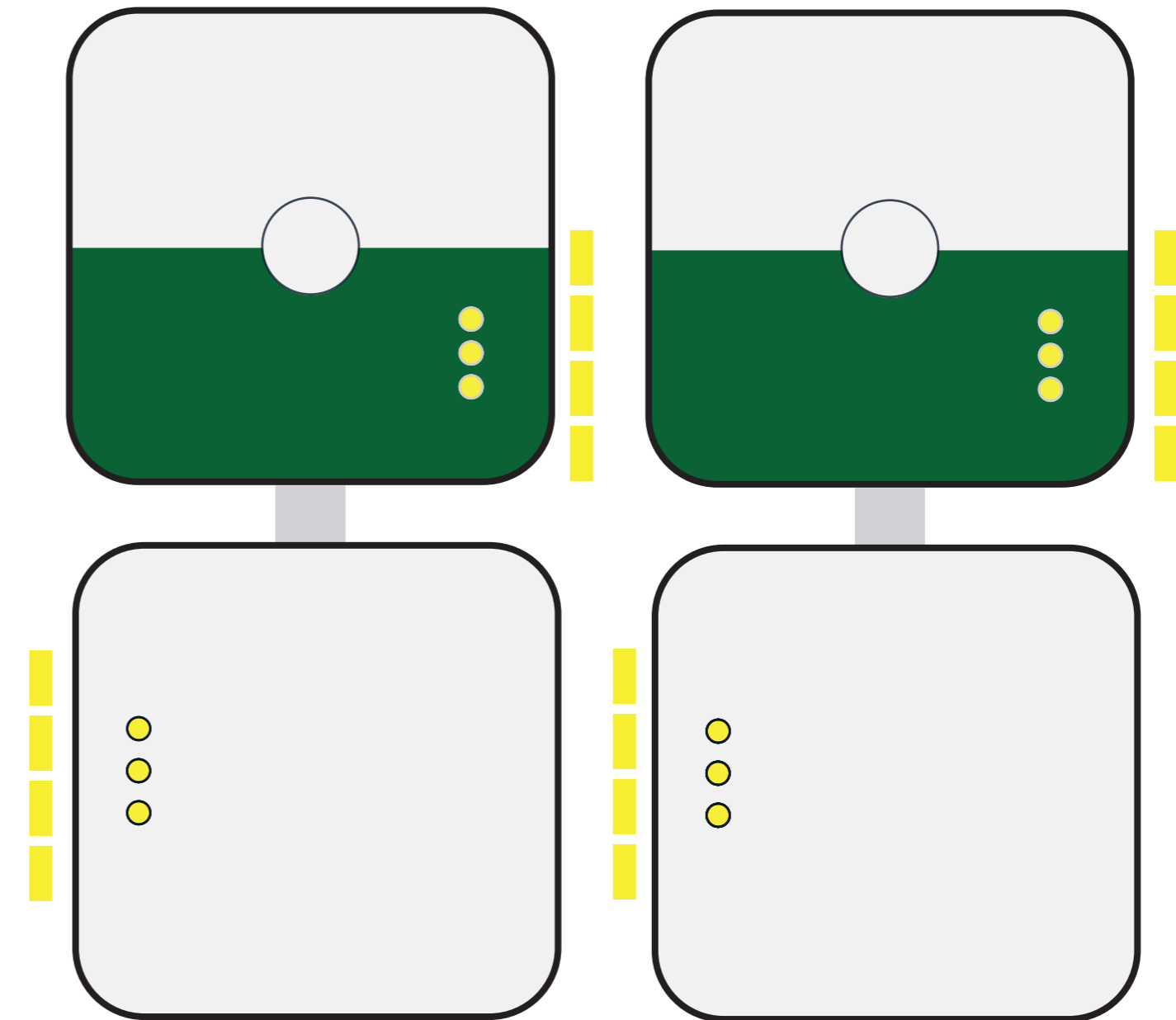


**A - Move the switch to "GATEWAY"  
or B - Move the switch to "□"**

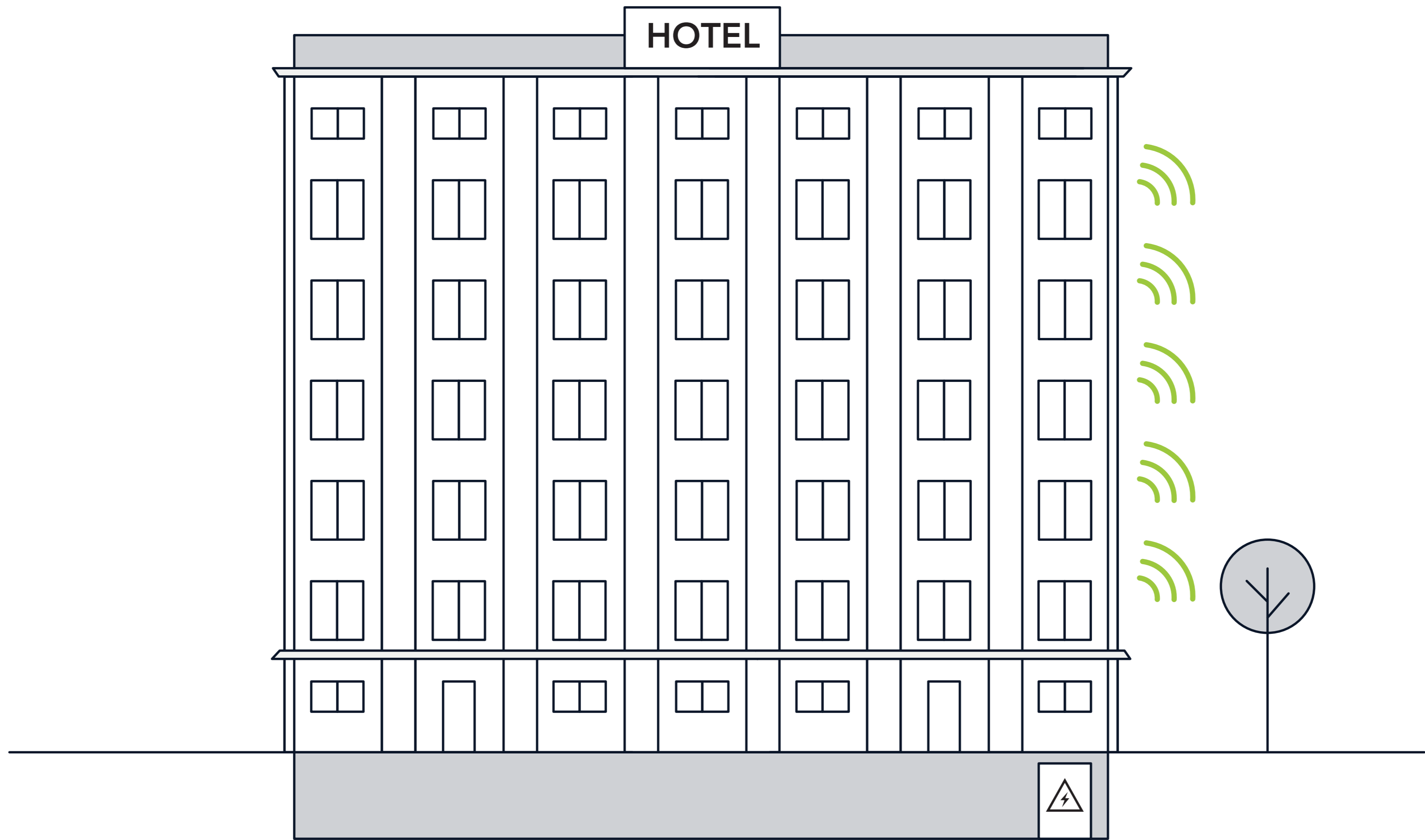
**A. DIN rail**



**B. wall mount**

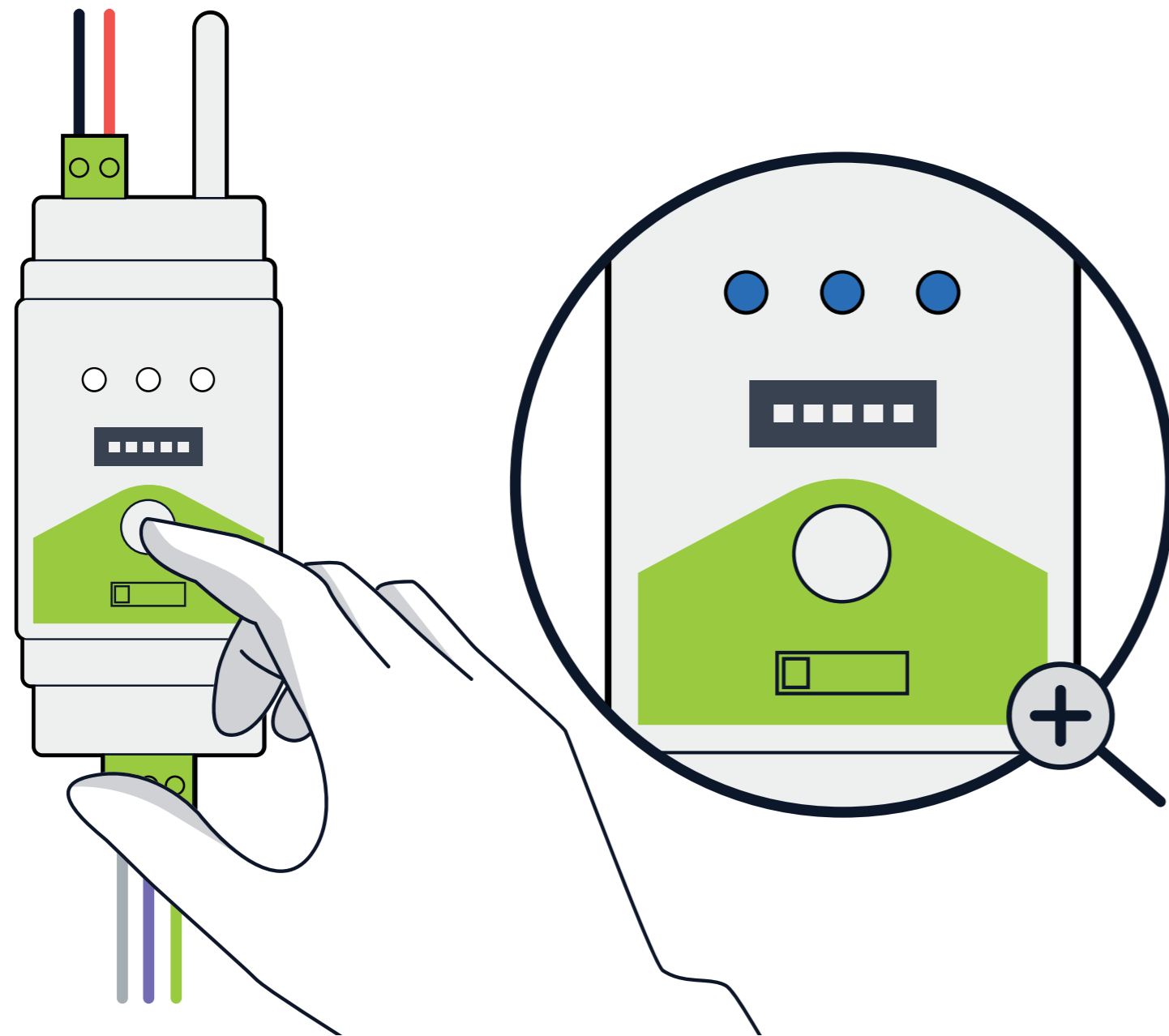


**The devices blink yellow entering secure mode.  
This may take up to 5 minutes.**

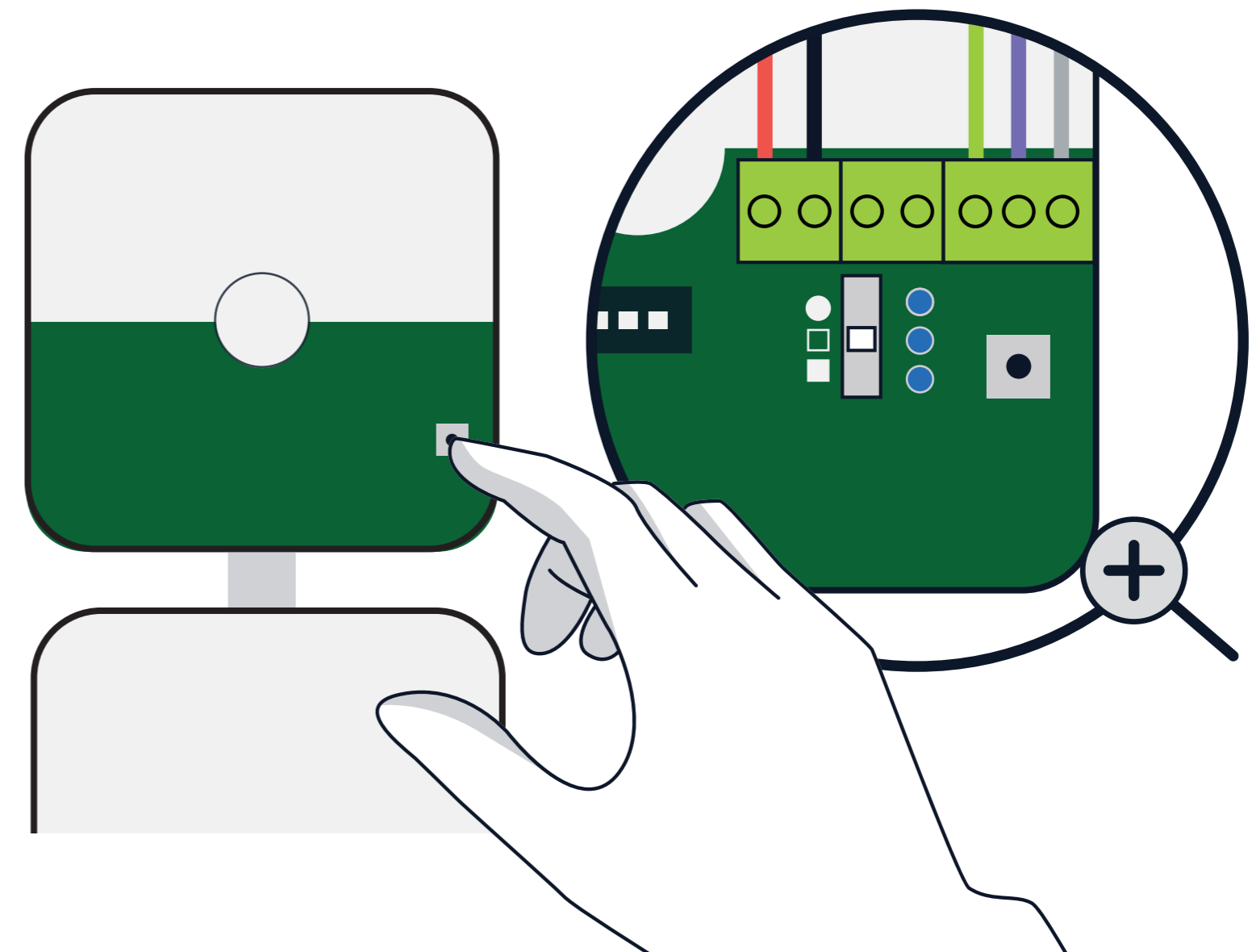


**Now you have a wireless connection!**

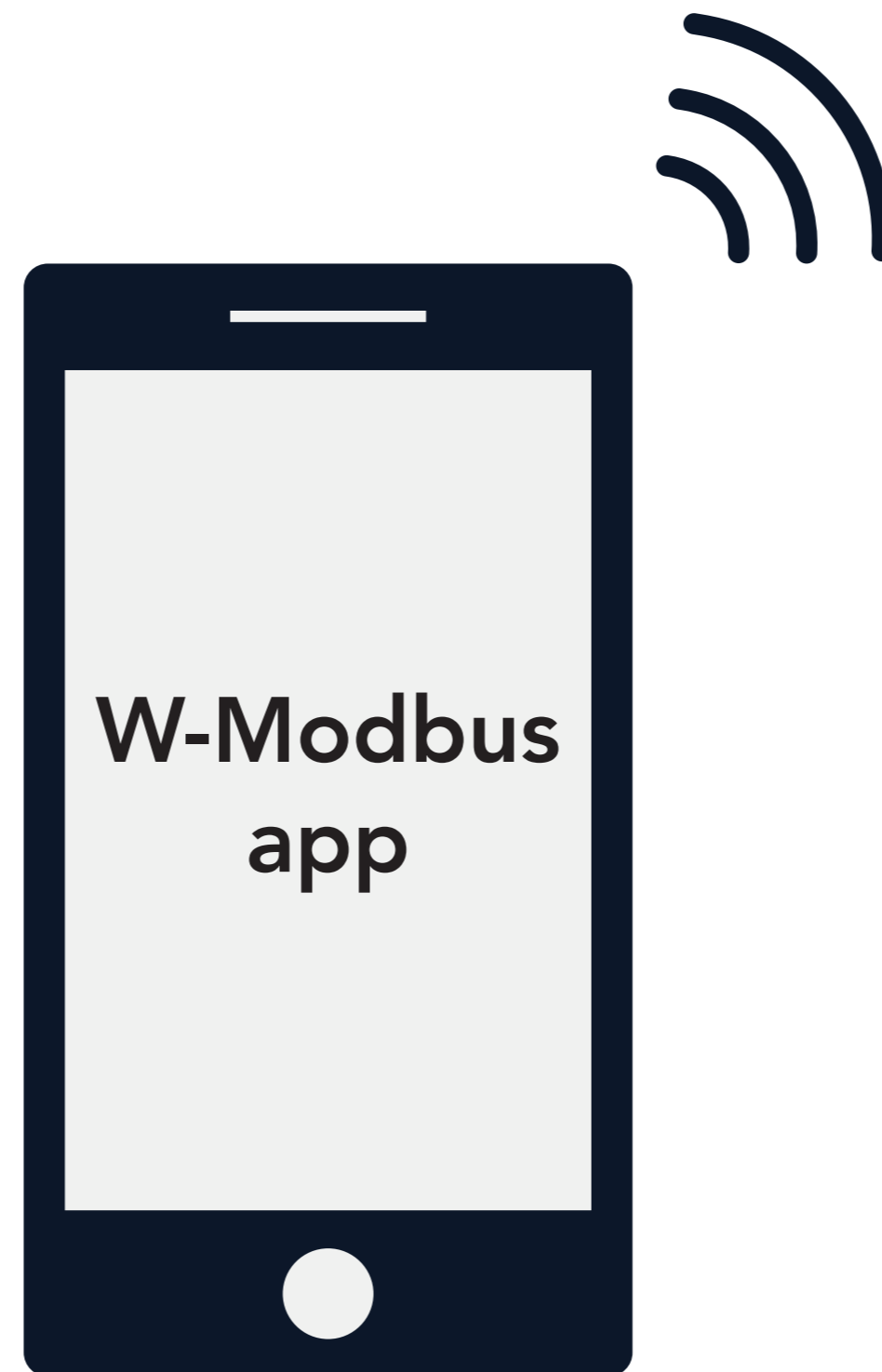
**A. DIN rail**



**B. wall mount**



**To use the W-Modbus app, press the button on the gateway three times so that it blinks blue twice and you are ready to connect.**



**Verify your installation in the app.  
For a detailed overview, select Network Map.**



Learn more at [www.lumenradio.com](http://www.lumenradio.com)