

**INTESIS MAPS: CONFIGURATION AND MONITORING SOFTWARE
GATEWAY CONFIGURATION GUIDE FOR PANASONIC**

INTESIS MAPS USER MANUAL
Version 1.0.3
Publication date 2024-04-22



Intesis MAPS

Copyright © 2023 Intesis

Disclaimer

The information in this document is for informational purposes only. Please inform HMS Networks of any inaccuracies or omissions found in this document. HMS Networks disclaims any responsibility or liability for any errors that may appear in this document.

HMS Networks reserves the right to modify its products in line with its policy of continuous product development. The information in this document shall therefore not be construed as a commitment on the part of HMS Networks and is subject to change without notice. HMS Networks makes no commitment to update or keep current the information in this document.

The data, examples and illustrations found in this document are included for illustrative purposes and are only intended to help improve understanding of the functionality and handling of the product. In view of the wide range of possible applications of the product, and because of the many variables and requirements associated with any particular implementation, HMS Networks cannot assume responsibility or liability for actual use based on the data, examples or illustrations included in this document nor for any damages incurred during installation of the product. Those responsible for the use of the product must acquire sufficient knowledge in order to ensure that the product is used correctly in their specific application and that the application meets all performance and safety requirements including any applicable laws, regulations, codes and standards. Further, HMS Networks will under no circumstances assume liability or responsibility for any problems that may arise as a result from the use of undocumented features or functional side effects found outside the documented scope of the product. The effects caused by any direct or indirect use of such aspects of the product are undefined and may include e.g. compatibility issues and stability issues.

Table of Contents

| | |
|-----------------------------------------------------------------------|-----------|
| 1. Introduction to Intesis MAPS | 1 |
| 2. Prerequisites | 2 |
| 3. Installation | 3 |
| 4. Create a New Project from a Template | 4 |
| 5. Saving, Opening, Importing, and Exporting the Project | 5 |
| 6. Main Menu Overview | 7 |
| 6.1. Configuration Tab | 7 |
| 6.1.1. General Configuration Menu | 8 |
| 6.1.1.1. General Configuration | 8 |
| 6.1.1.2. Connection | 9 |
| 6.1.1.3. Time Configuration | 9 |
| 6.1.1.4. Security | 9 |
| 6.1.1.5. Wiring Diagram | 10 |
| 6.1.2. BMS Protocol | 10 |
| 6.1.3. Panasonic Protocol (Device Protocol) | 11 |
| 6.1.3.1. Lines Configuration | 11 |
| 6.1.3.2. Global Parameters | 12 |
| 6.1.3.3. Occupancy | 12 |
| 6.1.3.4. Consumption Function | 13 |
| 6.2. Connection Tab | 17 |
| 6.3. Signals Tab | 19 |
| 6.4. Receive/Send Tab | 20 |
| 6.5. Diagnostic Tab | 21 |
| 7. BMS Protocols Available | 23 |
| 7.1. Modbus | 23 |
| 7.1.1. Modbus Configuration Tab | 23 |
| 7.1.1.1. Modbus Configuration | 23 |
| 7.1.1.2. RTU Configuration | 24 |
| 7.1.1.3. TCP Configuration | 24 |
| 7.1.1.4. Temperature Sensor | 25 |
| 7.2. KNX | 26 |
| 7.2.1. KNX Configuration Tab | 26 |
| 7.2.1.1. Device Configuration | 26 |
| 7.2.1.2. Operating Mode | 26 |
| 7.2.1.3. Temperature Sensor | 27 |
| 7.2.1.4. Fan Speed | 27 |
| 7.2.1.5. Vanes Position | 27 |
| 7.3. BACnet | 28 |
| 7.3.1. BACnet Configuration Tab | 28 |
| 7.3.1.1. BACnet Server General Configuration | 28 |
| 7.3.1.2. Gateway Mode | 28 |
| 7.3.1.3. Temperature Sensor | 29 |
| 7.3.1.4. BACnet Advanced Configuration | 29 |
| 7.3.1.4.1. Notification Class | 30 |
| 7.3.1.4.2. Calendars | 34 |
| 7.3.1.4.3. Schedules | 35 |
| 7.3.1.4.4. Trend Logs | 40 |

- 7.4. Home Automation 42
 - 7.4.1. Home Automation Configuration Tab 42
 - 7.4.1.1. Available Commands 42
 - 7.4.1.2. TCP Configuration 42
- 8. Late Configuration: Change the Gateway's Protocol 43**

1. Introduction to Intesis MAPS

Intesis MAPS® is a software tool for configuring and monitoring the Intesis® gateways. Intesis MAPS has been designed and developed in-house, assuring an up-to-date tool to get all the potential of our gateways.

**NOTE**

Intesis MAPS is compatible with Windows® 7 and higher.

The design of this configuration tool focuses on four main pillars:

- A user-friendly interface.
- Multiple ways to create your project:
 - From scratch, using a template.
 - Importing data from your computer.
 - Downloading the settings from an already configured gateway.
- Full linkage between the control system and the HVAC installation signals.
- Real-time monitoring of the HVAC network.

2. Prerequisites

To configure the gateway, you need:

- The items supplied by HMS Networks:
 - Intesis IN770AIR***O000 gateway
 - Gateway documentation:
 - Installation guide: http://www.intesis.com/docs/installation-sheet-in770pan***o000
 - User manual: https://www.intesis.com/docs/librariesprovider11/manuals-design-guides/user-manuals/ac-interfaces/user-manual-in770pan***o000.pdf
 - USB Mini-B type to USB A type cable to connect the gateway and the computer.

**NOTE**

For Modbus TCP, KNX, BACnet/IP, and Home Automation, you can use an Ethernet cable instead (not included).

- A computer to run the configuration tool Intesis MAPS.

**NOTE**

Requirements:

- Windows 7 or higher
- Hard disk free space: 1 GB
- RAM: 4 GB

3. Installation

Downloading the software

1. Enter the Intesis MAPS section on the Intesis webpage: <https://www.intesis.com/products/intesis-maps>
2. Fill out the form.
3. Check the consent box (**I hereby give consent for HMS to process my data**).
4. Click the **DOWNLOAD MAPS** button.
5. A .zip file will be downloaded to your computer.

Installing the software

1. Click the ZIP file to open it.
2. Double-click the EXE file.
3. The Intesis MAPS Setup Wizard will guide you through the steps required to install Intesis MAPS on your computer:
 - a. Read the license agreement and select **I Agree**.
 - b. Select the installation folder.
4. Once the installation is completed, click the **Close** button.

4. Create a New Project from a Template

1. Open Intesis MAPS.
2. Click **Create New Project** in the **Getting started** menu on the left.
You can create a project from scratch using a template. To find the appropriate template, filter the search by:
 - Clicking on the protocol logos.
 - Typing the order code in the **Order Code** field.



NOTE

The order code is printed on the silver label placed on the gateway's right side.

- Looking for it on the list.

New Project

Select BMS Protocol

Select Template

Order Code:

| Project Name | BMS Protocol | Device Protocol | Description | Gateway Order Code |
|----------------|--------------|-----------------------------|-----------------------------------------------|-------------------------------------------------------|
| IN-KNX-BAC | KNX | BACnet Client | Intesis BACnet Client to KNX Gateway | IN701KNX1000000 INKNXBACxxxv00 IBKNXBACxxxv00 |
| IN-KNX-DALI-64 | KNX | DALI | Intesis DALI to KNX Gateway | INKNXDAL864v00 IBKNXDAL864v00 |
| IN-KNX-FJ | KNX | Fujitsu VRF | Intesis Fujitsu AC to KNX Gateway | INKNXFLxxx0v00 IBKNXFLxxx0v00 |
| IN-KNX-HI | KNX | Hitachi | Intesis Hitachi AC to KNX Gateway | IN778AIRxxx0000 INKNXHITxxx0v00 IBKNXHITxxx0v00 |
| IN-KNX-HS | KNX | Hisense | Intesis Hisense AC to KNX Gateway | IN778AIRxxx0000 INKNXHSxxx0v00 IBKNXHSxxx0v00 |
| IN-KNX-LG | KNX | LG | Intesis LG AC to KNX Gateway | INKNXLGxxx0v00 |
| IN-KNX-MBM | KNX | Modbus Master | Intesis Modbus Master to KNX Gateway | IN701KNXxxx0000 INKNXMBxxxv00 IBKNXMBxxxv00 |
| IN-KNX-MBUS | KNX | M-Bus | Intesis M-Bus to KNX Gateway | INKNXMBxxxv00 IBKNXMBxxxv00 |
| IN-KNX-MD | KNX | Midea | Intesis Midea to KNX Gateway | IN778AIRxxx0000 |
| IN-KNX-ME | KNX | Mitsubishi Electric | Intesis Mitsubishi Electric AC to KNX Gate... | IN778AIRxxx0000 INKNXMExxx0v00 IBKNXMExxx0v00 |
| IN-KNX-MH | KNX | Mitsubishi Heavy Industries | Intesis Mitsubishi Heavy Industries to KNX... | IN778IHIxxx0000 |
| IN-KNX-PA | KNX | Panasonic | Intesis Panasonic to KNX Gateway | IN778AIRxxx0000 INKNXPAxxx0v00 IBKNXPAxxx0v00 |
| IN-KNX-SM | KNX | Samsung NASA | Intesis Samsung NASA AC to KNX Gateway | IN778AIRxxx0000 INKNXSAxxx0v00 IBKNXSAxxx0v00 |

Device model:

Available Licenses

- 100 points
- 250 points
- 600 points
- 1200 points
- 3000 points

Order Codes

- IN701KNX1000000
- IN701KNX2500000
- IN701KNX6000000
- IN701KNX1K200000
- IN701KNX3K000000

Figure 1. Three possibilities for the template selection

3. Select the desired template.
4. Click **Next** or **double-click the template** on the list.



NOTE

Templates are just a starting point for your integration. Depending on the type of integration, you may have to modify some parameters.

5. Saving, Opening, Importing, and Exporting the Project

While working on your project with Intesis MAPS, an asterisk appears on the Configuration tab, as shown in this picture below:

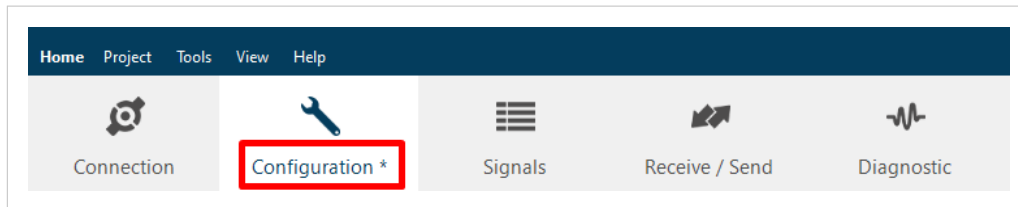


Figure 2. The Configuration tab showing an asterisk

This asterisk reminds you that you have made changes to the project but have not saved them or sent the project to the gateway yet. To know how to send your project to the gateway, see [Receive/Send Tab \(page 20\)](#).

- **Saving your Intesis MAPS project.**



IMPORTANT

Remember to save your project periodically so you keep your changes.

1. Click **Project**.

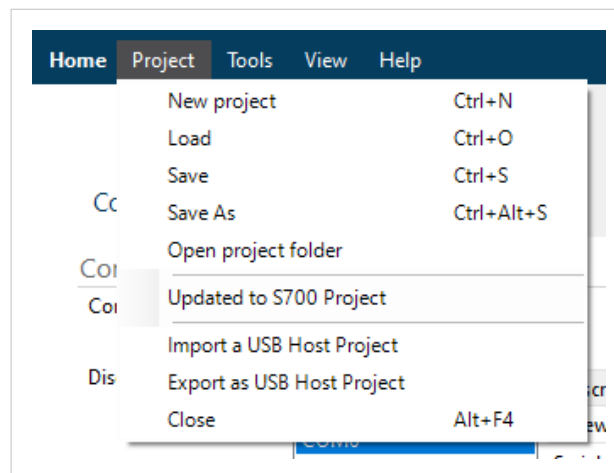


Figure 3. Project tab from the top menu

2. Click **Save** or **Save As**.



TIP

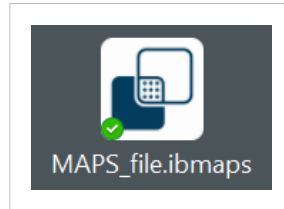
Instead, you can use the shortcut **Ctrl+S** (Save) or **Ctrl+Alt+S** (Save As).

3. On the **Save file** menu, type a **File name** and select where to save the file.
4. Click **Save**.

- **Opening an Intesis MAPS project from your computer.**

**TIP**

Double-click a .ibmaps file saved in your computer to automatically open it in Intesis MAPS.



1. Click **Project**.
 2. Click **Load**.
 3. On the emergent window, select the desired file from your computer.
 4. Click **Open**.
- **Exporting your Intesis MAPS project to a USB flash drive.**
 1. Click **Project**.
 2. Click **Export as USB Host Project**.
 3. On the **Save file** window, type a **File name** and select your USB flash drive.
 4. Click **Save**.
 - **Importing a project from a USB flash drive to Intesis MAPS.**
 1. Click **Project**.
 2. Click **Import a USB Host Project**.
 3. On the **Open file** window, select the desired file from your USB flash drive.
 4. Click **Open**.

6. Main Menu Overview

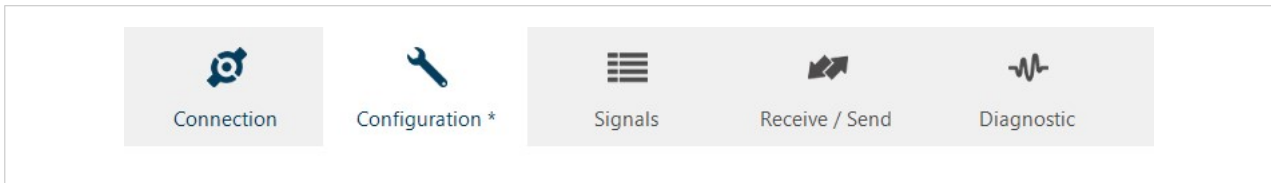
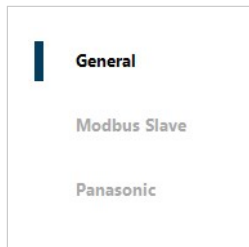


Figure 4. Intesis MAPS main menu

The following sections provide an overview of the five tabs that compose the Intesis MAPS main menu. Through these options, you will configure your project, send it to the gateway, and monitor that everything works fine using the **Diagnostic** tab.

6.1. Configuration Tab

Find on the left side of the **Configuration** tab a menu with three options:



- **General:** Configure the general parameters of the gateway.
- **Building management system (BMS) protocol:** Modbus, KNX, BACnet, or Home Automation, depending on your project's current application. In the case of the image on the left, the control system is based on Modbus.
- **Panasonic:** Protocol of the AC installation.

6.1.1. General Configuration Menu

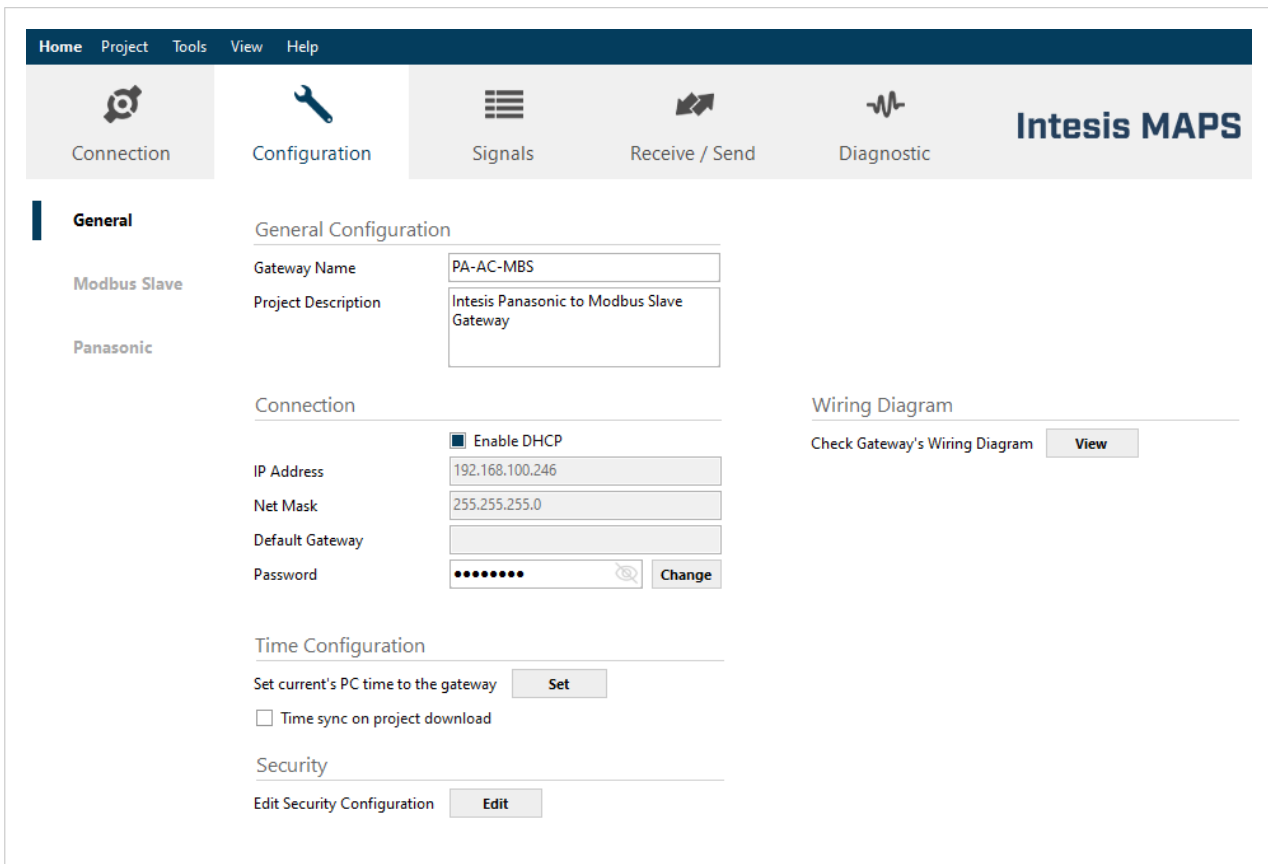


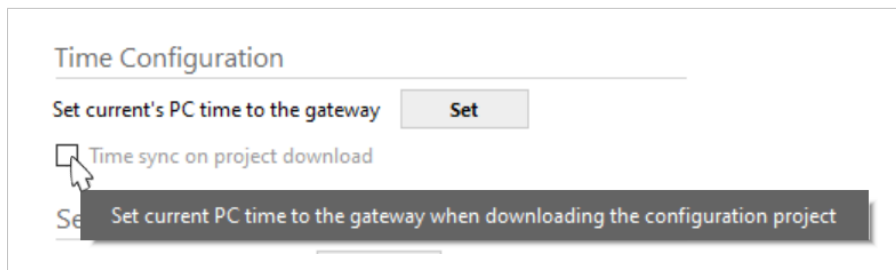
Figure 5. General configuration menu on the Configuration tab

Use this menu to configure some general parameters of the gateway.



TIP

Tooltip: Hover the cursor over a field, and a message will appear indicating the purpose of the parameter.



6.1.1.1. General Configuration

- **Gateway Name:** Type a descriptive name for your gateway.
- **Project Description:** Type a short description of your project.

6.1.1.2. Connection



NOTE

When commissioning the gateway for the first time, DHCP will be enabled for 30 seconds. During that time, an IP address will be automatically assigned to the gateway if there is a DHCP server. If there is no DHCP, you can type an IP address of your choice. After that time, the default **IP address 192.168.100.246** will be automatically set.

You can find this default IP address written in the installation guide.

- **Enable DHCP:** Use this option for networks that have a DHCP server. Uncheck this option to unlock the following parameters:
 - **IP Address:** Assign a fixed IP address for the gateway.
 - **Net Mask:** Set the gateway IP netmask.
 - **Default Gateway:** Type the IP for the default gateway.



NOTE

The **Default Gateway** parameter is optional, but you must define it when a connection to the internet or other networks is needed.

- **Password.** Follow these instructions to set a new password for the gateway:
 1. Click the **Change** button.
 2. Type a new password.
 3. Go to the **Receive/Send** tab.
 4. In the **Send** menu, click the **Send** button.
 5. Go to the **Connection** tab.
 6. Select the gateway from the **Discovered Gateways** window.
 7. Click **Connect**.

6.1.1.3. Time Configuration

- **Set current PC time to the gateway:** Connect the gateway to your PC and click the **Set** button to set the gateway's time with your PC's current time.
- **Time sync on project download** (disabled by default): The gateway's clock is set to your PC time when downloading the project to the gateway.

6.1.1.4. Security

- **Edit Security Configuration:** Click the **Edit** button to open the **Security Configuration** window.



IMPORTANT

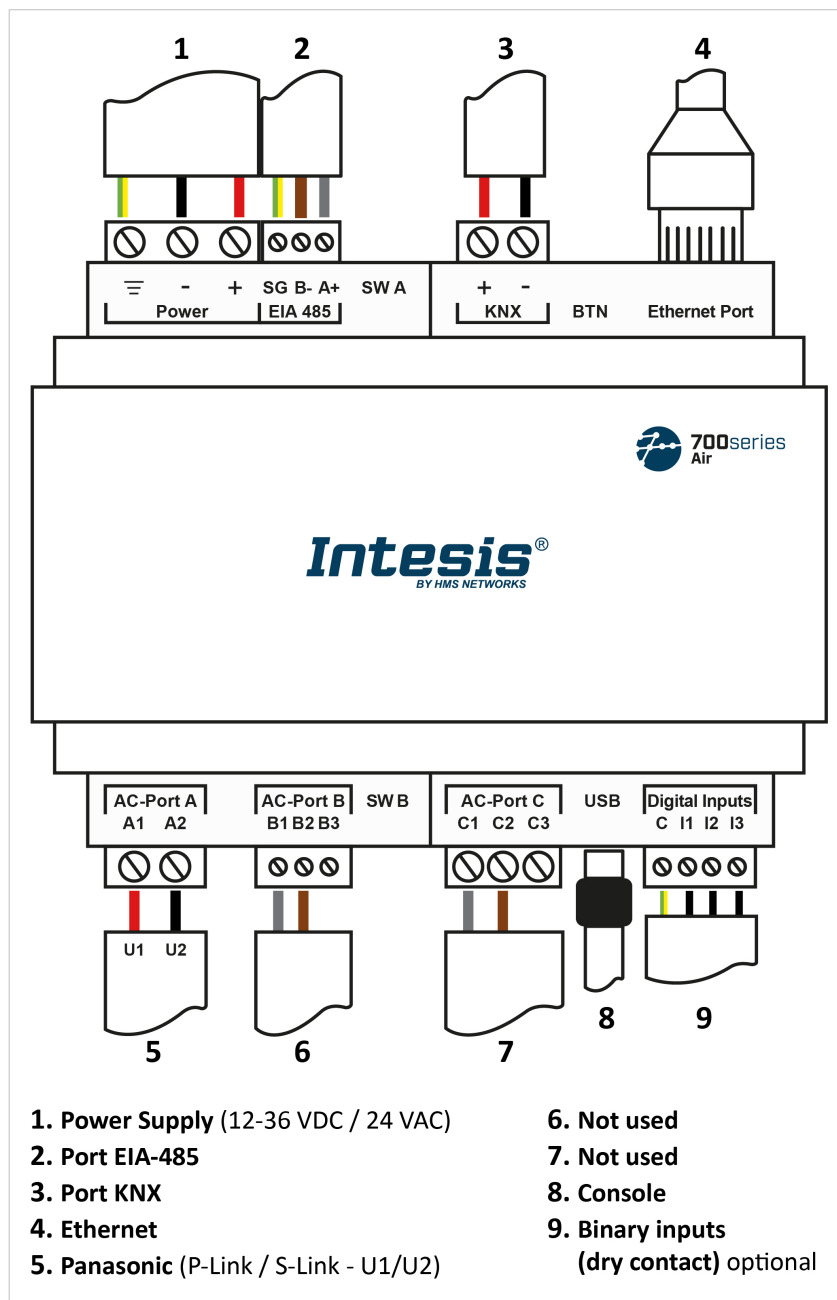
We recommend keeping the predetermined configuration.

- **Disable UPD Discover Service** (disabled by default): The gateway is not discoverable through UDP communication.
- **Disable TCP Console Service** (disabled by default): The gateway stops communicating with the configuration and diagnostic software through TCP. This only applies to gateways supporting connection to the PC via both Ethernet and console ports.
- **Disable HTTPS Certificates Auto Update** (enabled by default): Automatic updates for the HTTPS certificates are not allowed.

Click **Save** to save the changes.

6.1.1.5. Wiring Diagram

- **Check Gateway's Wiring Diagram:** Click the **View** button to open the schematic image on how to wire the gateway.



6.1.2. BMS Protocol

The parameters in this menu vary depending on the current application. Consult these sections for each protocol:

- [Modbus \(page 23\)](#)
- [KNX \(page 26\)](#)
- [BACnet \(page 28\)](#)
- [Home Automation \(page 42\)](#)

6.1.3. Panasonic Protocol (Device Protocol)

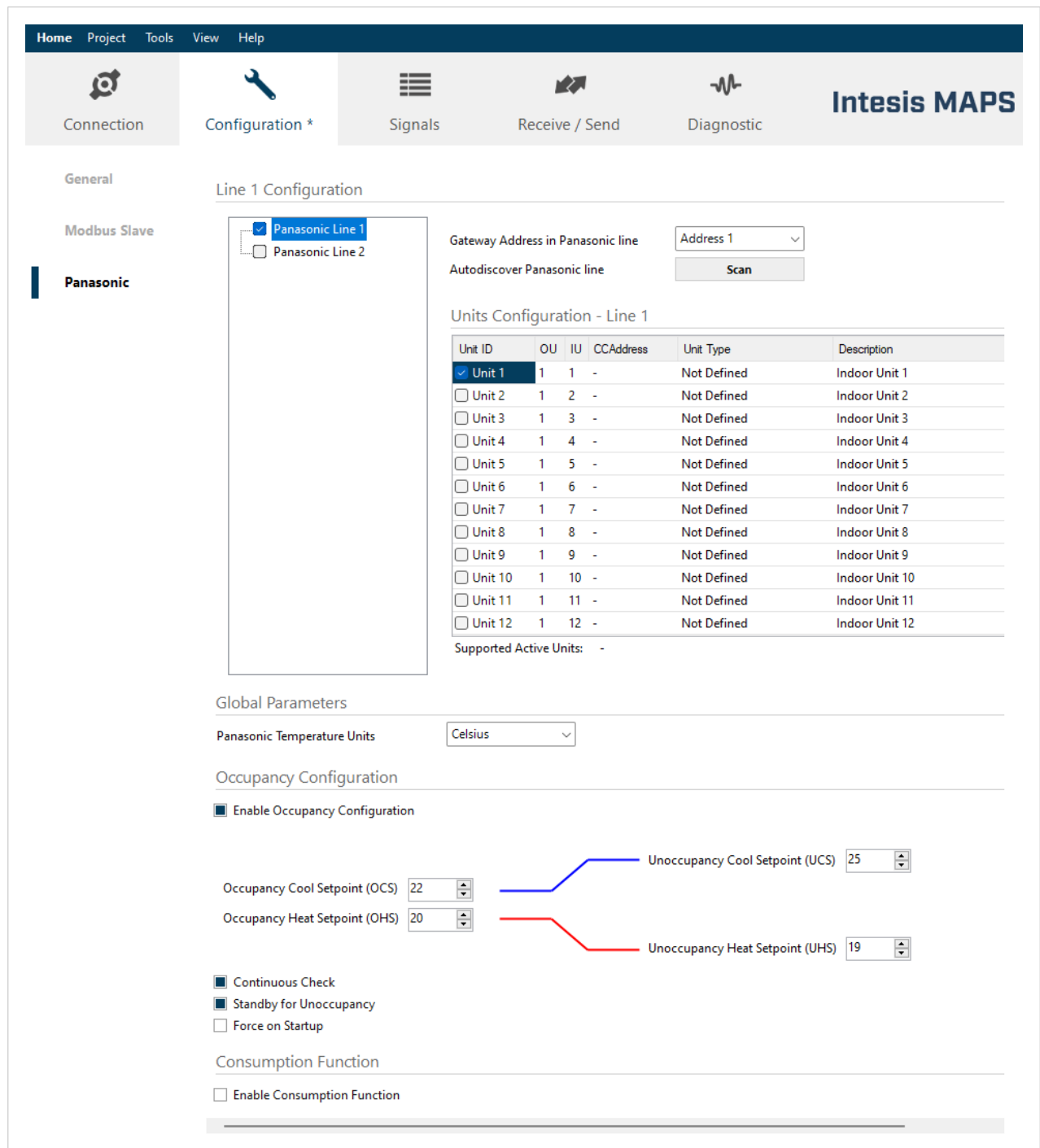


Figure 6. Panasonic protocol parameters inside the Configuration tab

Use this menu to integrate AC indoor and outdoor units into your project and configure some Panasonic protocol parameters.

6.1.3.1. Lines Configuration

1. Select the **Panasonic Line**.
 2. Select the **Gateway Address in Panasonic line: Address 1 or Address 2**.
- **Autodiscover Panasonic Line:** This function discovers all indoor and outdoor units connected to the installation.

1. Click the **Scan** button to open the Scan Panasonic Units window:

Figure 7. Bus Scan window

2. Click the **Installation with units not addressed (no central address assigned)** checkbox if applicable. If so, set the **OU Scan range** by selecting its low and high limits.
 3. Start the bus scanning by clicking the **Scan** button.
 4. Once the scanning has finished, you can select or deselect which units you want to integrate.
 - Check the **Replace Units** option if you want the units you have now selected to replace the previously listed units.
 - Check the **Add Units** option if you want to add the units you have now selected to the previously listed units.
 5. Click **Apply** to replace/add the discovered units you have selected.
- **Units Configuration:** Use this table to configure some parameters related to the AC units of your project:
 - **Unit ID:** Check which units you want to integrate.
 - **OU:** Set a number for each outdoor unit.
 - **IU:** Set a number for each indoor unit.
 - **Description:** Type a description for each unit.

6.1.3.2. Global Parameters

- Panasonic **Temperature Units:** Temperature unit in Celsius or Fahrenheit degrees.

6.1.3.3. Occupancy

- **Enable Occupancy Configuration:** Click the checkbox to enable this parameter.
- **Occupancy Cool Setpoint (OCS):** Set the temperature for the cool mode when the room is occupied (Celsius: 1 to 100°C, Fahrenheit: 33 to 212°F).
- **Unoccupancy Cool Setpoint (UCS):** Set the temperature for the cool mode when the room is unoccupied (Celsius: 1 to 100°C, Fahrenheit: 33 to 212°F).

**IMPORTANT**

UCS must always be greater or equal to OCS.

- **Occupancy Heat Setpoint (OHS):** Set the temperature for the heat mode when the room is occupied (Celsius: 1 to 100°C, Fahrenheit: 33 to 212°F).
- **Unoccupancy Heat Setpoint (UHS):** Set the temperature for the heat mode when the room is unoccupied (Celsius: 1 to 100°C, Fahrenheit: 33 to 212°F).

**IMPORTANT**

UHS must always be smaller or equal to OHS.

**IMPORTANT**

The minimum difference between Cool and Heat setpoints must be 2°C / 4°F.

- **Continuous Check:** Click the checkbox to enable/disable this parameter. When enabled, the gateway checks the occupancy when there's any change in the room's temperature. If the parameter is unchecked, it only checks the occupancy when the occupancy status changes.
- **Standby for Unoccupancy:** Click the checkbox to enable/disable this parameter, which determines the indoor unit's behavior while the ambient temperature is in between the deadband. If enabled, the indoor unit will turn off; if disabled will remain on.
- **Force on startup:** Click the checkbox to enable/disable this parameter. If enabled, the values you set in the configuration screen will be loaded after a reset. If disabled, the last values selected will be loaded after reset.

6.1.3.4. Consumption Function

With this function, you can monitor the energy consumption of the integrated indoor units.

**IMPORTANT**

Before using this function, ensure the AC system and the pulse/Modbus energy meters are already installed, wired, configured, and properly working.

- **Enable Consumption Function:** Click the checkbox to enable this parameter.
- **Select Energy Meters Input Mode:** Choose between **Modbus TCP Energy Meters** and **Pulse Meters & Binary Inputs**.
- **Energy Meters Configuration:** Click the **Edit** button to open the **Energy Meter Configuration** window.

**NOTE**

The configuration parameters will vary depending on the energy meter type selected.

- Energy meter configuration for **Modbus TCP Energy Meters**.

Energy Meter Configuration

Select Meter Energy Meter 1 ▾

Meter 1 Configuration

| | |
|---------------------------------------------------------------------------------------------|---------------------------------------------------------------------------|
| Description <input style="width: 90%;" type="text" value="Energy Meter 1"/> | Read Function 3: Read Holding Regist ▾ |
| IP Address <input style="width: 90%;" type="text" value="192.168.1.1"/> | Data Length 16 ▾ |
| Port <input style="width: 90%;" type="text" value="502"/> | Format 0: Unsigned ▾ |
| Slave Number <input style="width: 90%;" type="text" value="1"/> | Byte Order Big Endian ▾ |
| Modbus Register (active energy imported) <input style="width: 90%;" type="text" value="0"/> | |
| Register Units Wh ▾ | |

Advanced MB Configuration

| | |
|-------------------------------------------------------------------------|------------------------------------------------------------------------|
| Time InterFrame <input style="width: 90%;" type="text" value="10"/> ms | Rx Timeout <input style="width: 90%;" type="text" value="5000"/> ms |
| Retry Timeout <input style="width: 90%;" type="text" value="5000"/> ms | Time Slave Chg <input style="width: 90%;" type="text" value="100"/> ms |
| Conn. Timeout <input style="width: 90%;" type="text" value="10000"/> ms | |

Use the **Select Meter** parameter to choose the energy meter you want to configure.



NOTE

Up to three energy meters are available.

• Meter 1 Configuration.

- **Description:** Type a description for the meter.
- **IP Address:** It shows the IP address where the meter is located.
- **Port:** Port for the Modbus TCP/IP connection. (**502** port by default).
- **Slave Number:** Energy meter slave Modbus address (1 to 254).
- **Modbus Register (active energy imported):** Modbus register to read (1 to 65535).
- **Register Units:** Choose **Wh** or **kWh**.
- **Read Function:** Read register type for this function. Choose between function **3: Read Holding Registers** and function **4: Read Input Registers**.
- **Data Length:** Number of bits for the Modbus register (16, 32, or 64 bits).
- **Format:** Select the data type between **0: Unsigned**, **1: Signed (C2)**, **2: Signed (C1)**, **3: Float**.
- **Byte Order:** Choose **Big Endian**, **Little Endian**, **Word Inv BE**, **Word Inv LE**.

• Advanced MB Configuration.

You can modify these Modbus parameters to adapt the Modbus communication to every installation.



IMPORTANT

These parameters are for advanced users only. As a general rule, keep the default values for proper communication with the meter.

- **Time InterFrame:** Select the minimum time between received and sent frames (0 to 100000 ms. Default value: **10 ms**).
- **Retry Timeout:** Select the minimum time between retry frames after no response on the TCP connection (0 to 30000 ms. Default value: **5000 ms**).
- **Conn. Timeout:** Select the minimum time before launching an error message after no response on the TCP connection (100 to 30000 ms. Default value: **10000 ms**).

- **RX Timeout:** Select the minimum time before launching an error message when no TCP frames are received but the TCP connection is OK (100 to 30000 ms. Default value: **5000 ms**).
 - **Time Slave Chg:** Select the minimum time of silence when changing from one slave device to another one (100 to 10000 ms. Default value: **100 ms**).
- Energy meter configuration for **Pulse Meters & Binary Inputs**.

Use the **Select Meter** parameter to choose the energy meter you want to configure.

- **Meter 1 Configuration.**

- **Description:** Type a description for the meter.
- **Binary Input (not editable):** It shows to which gateway's digital input the meter will connect.
- **Pulse Measurement:** Set the equivalence between pulses and energy.



IMPORTANT

This value must match the configuration of the energy meter device.

- **Pulse Width:** It defines the width of each pulse.



IMPORTANT

This value must match the configuration of the energy meter device.

- **Trigger Edge Mode:** Choose between **Falling** or **Rising** mode.
- **AC Consumption refresh time:** It defines the time to refresh the consumption values for this energy meter.

- **Energy Metering Signals Mode.** Choose between:

- **General Consumption.** It activates three signals for each indoor unit:
 - Consumption Yesterday
 - Consumption Today
 - Consumption Total
- **Cool/Heat modes consumption.** It activates six signals for each indoor unit:
 - Consumption Yesterday Heat
 - Consumption Today Heat
 - Consumption Total Heat
 - Consumption Yesterday Cool
 - Consumption Today Cool
 - Consumption Total Cool

- **Energy Metering Units:** Choose between **Wh** or **KWh**.

- **Assignment table.** Use this table to assign the previously selected **Indoor Units** to each **Energy Meter**.
 - Select the **Energy Meter** for each **Outdoor Unit/Indoor Unit**.

| Line | Outdoor Unit | Indoor Unit | Energy Meter | EM IP Address | EM Description |
|------|--------------|-------------|--------------|---------------|----------------|
| 1 | 1 | 1,2 | Meter 2 | - | - |
| 1 | 2 | 5,6 | Meter 1 | - | - |
| 1 | 3 | 12 | Meter 3 | - | - |
| 1 | 4 | 14 | - | - | - |

6.2. Connection Tab

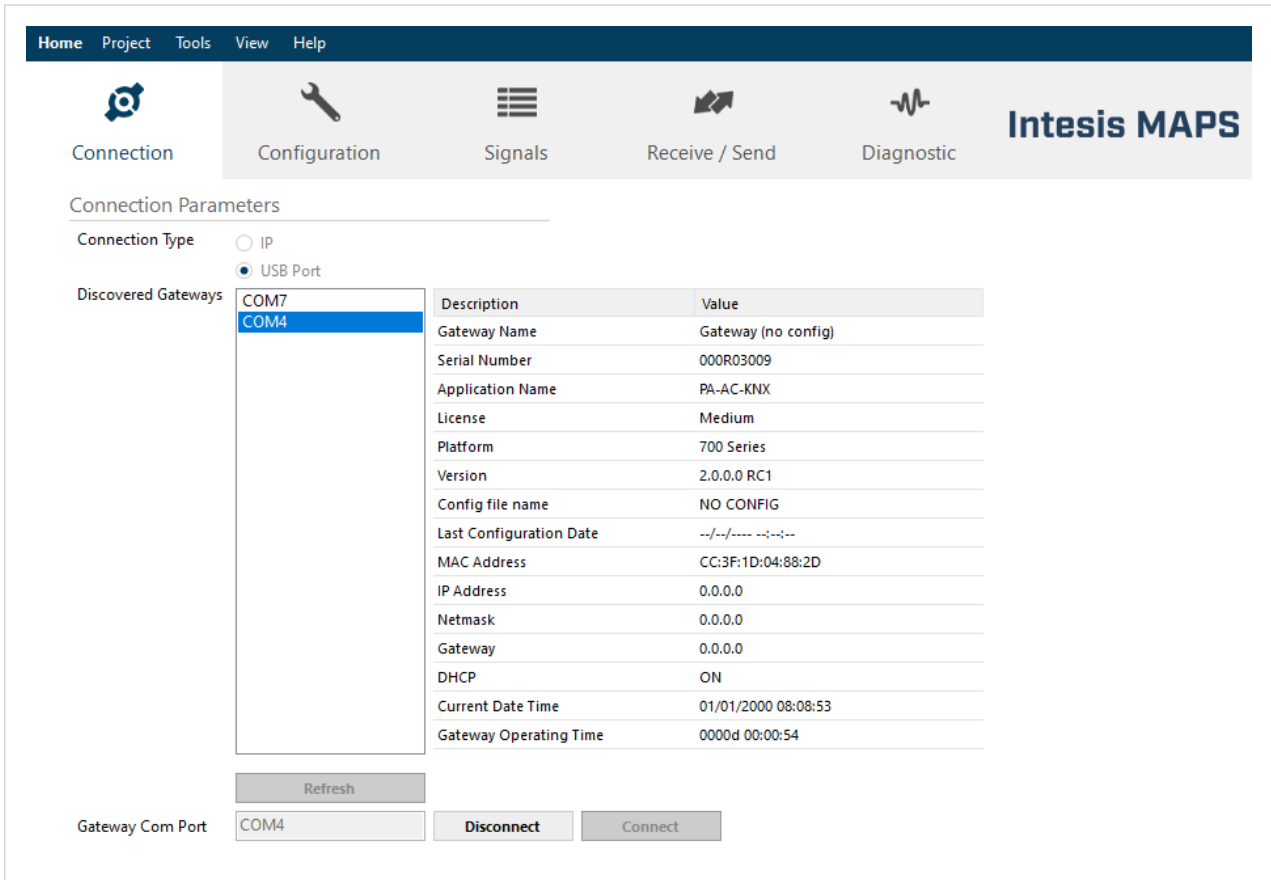


Figure 8. Connection tab window

- Connect the gateway to your PC.
 - Use the gateway's **Ethernet port** and an Ethernet CAT5 or higher cable.
 - Use the **Console** port and a USB Mini-B type to USB A type cable.
- On the **Connection Type** parameter, select the way you connected the gateway to your PC:
 - Select **IP** if you are using the **Ethernet port** of the Intesis gateway.



NOTICE

The default password when connecting via IP is **admin**.



IMPORTANT

Make sure you have an internet connection.



NOTE

When using the IP connection, the gateway's name appears:

- In black:** It is compatible with the selected template.
- In red:** It is not compatible with the selected template.

- Select **USB Port** if you are using the **Console** port of the gateway.

**NOTICE**

No password is needed when connecting via USB.

3. Select your gateway from the **Discovered Gateways** list on the left.
4. Click **Connect**.

**NOTE**

If your Intesis gateway firmware doesn't match the selected template, a pop-up window will prompt you to download the correct firmware.

When selecting IP as the connection type, two additional buttons will appear:

- **Identify**: Click the **Identify** button to make the gateway's LEDs blink for 10 seconds.
- **Edit**: Click the **Edit** button to open the **Config IP settings** window.

| Description | Value |
|-------------|--------------------------|
| Mac Address | CC:3F:1D:02:A2:C0 |
| IP Address | 10.113.51.238 |
| NetMask | 255.255.252.0 |
| Gateway | 10.113.48.5 |
| Is DHCP | <input type="checkbox"/> |

Password

You can edit the **IP Address**, **NetMask**, and Default **Gateway IP**.

**NOTE**

These parameters can also be edited in the **Configuration** tab. See [Connection \(page 9\)](#).

6.3. Signals Tab

This menu lists all available signals and their parameters for both BMS and Device protocols.

| # | Active | Description | Modbus Slave | | | | Panasonic | | | |
|----|-------------------------------------|----------------------------------------------------|--------------|----------------|---------|-----|-----------------|--------------------|----|----|
| | | | Data L... | Format | Address | Bit | Read / Write | Unit | IU | OU |
| 1 | <input checked="" type="checkbox"/> | On (all the units) (1-Set the units On) | 16 | 0: Unsigned | 6 | - | 1: Trigger | - | - | - |
| 2 | <input checked="" type="checkbox"/> | Off (all the units) (1-Set the units Off) | 16 | 0: Unsigned | 7 | - | 1: Trigger | - | - | - |
| 3 | <input checked="" type="checkbox"/> | Operation Mode Auto (all the units) (1-Set A... | 16 | 0: Unsigned | 8 | - | 1: Trigger | - | - | - |
| 4 | <input checked="" type="checkbox"/> | Operation Mode Heat (all the units) (1-Set H... | 16 | 0: Unsigned | 9 | - | 1: Trigger | - | - | - |
| 5 | <input checked="" type="checkbox"/> | Operation Mode Dry (all the units) (1-Set Dr... | 16 | 0: Unsigned | 10 | - | 1: Trigger | - | - | - |
| 6 | <input checked="" type="checkbox"/> | Operation Mode Fan (all the units) (1-Set Fa... | 16 | 0: Unsigned | 11 | - | 1: Trigger | - | - | - |
| 7 | <input checked="" type="checkbox"/> | Operation Mode Cool (all the units) (1-Set C... | 16 | 0: Unsigned | 12 | - | 1: Trigger | - | - | - |
| 8 | <input checked="" type="checkbox"/> | Fan Speed Auto (all the units) (1-Set Fan Spe... | 16 | 0: Unsigned | 13 | - | 1: Trigger | - | - | - |
| 9 | <input checked="" type="checkbox"/> | Fan Speed Low (all the units) (1-Set Fan Spe... | 16 | 0: Unsigned | 14 | - | 1: Trigger | - | - | - |
| 10 | <input checked="" type="checkbox"/> | Fan Speed Med (all the units) (1-Set Fan Spe... | 16 | 0: Unsigned | 15 | - | 1: Trigger | - | - | - |
| 11 | <input checked="" type="checkbox"/> | Fan Speed High (all the units) (1-Set Fan Spe... | 16 | 0: Unsigned | 16 | - | 1: Trigger | - | - | - |
| 12 | <input checked="" type="checkbox"/> | Vanes Stop (all the units) (1-Set Vanes Stop) | 16 | 0: Unsigned | 17 | - | 1: Trigger | - | - | - |
| 13 | <input checked="" type="checkbox"/> | Vanes Position 1 (all the units) (1-Set Vanes P... | 16 | 0: Unsigned | 18 | - | 1: Trigger | - | - | - |
| 14 | <input checked="" type="checkbox"/> | Vanes Position 2 (all the units) (1-Set Vanes P... | 16 | 0: Unsigned | 19 | - | 1: Trigger | - | - | - |
| 15 | <input checked="" type="checkbox"/> | Vanes Position 3 (all the units) (1-Set Vanes P... | 16 | 0: Unsigned | 20 | - | 1: Trigger | - | - | - |
| 16 | <input checked="" type="checkbox"/> | Vanes Position 4 (all the units) (1-Set Vanes P... | 16 | 0: Unsigned | 21 | - | 1: Trigger | - | - | - |
| 17 | <input checked="" type="checkbox"/> | Vanes Position 5 (all the units) (1-Set Vanes P... | 16 | 0: Unsigned | 22 | - | 1: Trigger | - | - | - |
| 18 | <input checked="" type="checkbox"/> | Vanes Swing (all the units) (1-Set Vanes Swing) | 16 | 0: Unsigned | 23 | - | 1: Trigger | - | - | - |
| 19 | <input checked="" type="checkbox"/> | Temperature Setpoint (all units) (x10°C/°F) | 16 | 1: Signed (C2) | 24 | - | 1: Trigger | - | - | - |
| 20 | <input checked="" type="checkbox"/> | Communication Error OU (0-No error,1-Error) | 16 | 0: Unsigned | 7025 | - | 0: Read | - | - | 1 |
| 21 | <input checked="" type="checkbox"/> | Demand Limit. Ratio (0..200 % - 255-No limit) | 16 | 0: Unsigned | 7026 | - | 2: Read / Write | - | - | 1 |
| 22 | <input checked="" type="checkbox"/> | High Pressure Sensor ((x10) bar) | 16 | 0: Unsigned | 7027 | - | 0: Read | - | - | 1 |
| 23 | <input checked="" type="checkbox"/> | Low Pressure Sensor ((x10) bar) | 16 | 0: Unsigned | 7028 | - | 0: Read | - | - | 1 |
| 24 | <input checked="" type="checkbox"/> | Compressor 1 Operation Time (0..16777215 ... | 16 | 0: Unsigned | 7029 | - | 0: Read | - | - | 1 |
| 25 | <input checked="" type="checkbox"/> | Compressor 2 Operation Time (0..16777215 ... | 16 | 0: Unsigned | 7030 | - | 0: Read | - | - | 1 |
| 26 | <input checked="" type="checkbox"/> | Compressor 3 Operation Time (0..16777215 ... | 16 | 0: Unsigned | 7031 | - | 0: Read | - | - | 1 |
| 27 | <input checked="" type="checkbox"/> | On/Off (0-Off, 1-On) | 16 | 0: Unsigned | 100 | - | 2: Read / Write | Unit 1 - Indoor... | 1 | 1 |
| 28 | <input checked="" type="checkbox"/> | Operation Mode (0-Auto,1-Heat,2-Dry,3-Fa... | 16 | 0: Unsigned | 101 | - | 2: Read / Write | Unit 1 - Indoor... | 1 | 1 |
| 29 | <input checked="" type="checkbox"/> | Fan Speed (0-Auto,1-Low,2-Low+,3-Med,4-... | 16 | 0: Unsigned | 102 | - | 2: Read / Write | Unit 1 - Indoor... | 1 | 1 |
| 30 | <input checked="" type="checkbox"/> | Vane Position (0-Stop,1-Pos1,2-Pos2,3-Pos3,... | 16 | 0: Unsigned | 103 | - | 2: Read / Write | Unit 1 - Indoor... | 1 | 1 |
| 31 | <input checked="" type="checkbox"/> | Temperature Setpoint ((x10) °C/°F) | 16 | 1: Signed (C2) | 104 | - | 2: Read / Write | Unit 1 - Indoor... | 1 | 1 |

Figure 9. Signals tab for the Modbus server application

Regardless of the protocol, all signals share some common characteristics and parameters:

Signals background color meaning:

- **Blue:** General system signals.
- **Orange:** Signals for the outdoor units.
- **White:** Signals for the indoor units.

Below the list of signals, these options are available:

- **Active signals:** Number of active signals in the list / Total number of signals in the list.
- **Hide Disabled signals:** Hide all disabled signals from the list (disabled by default).
- **Edit Columns:** Click this button to hide/show any column of the list.
- **Export:** Click this button to export the current signals' configuration to an XLSX file.

- **A**: Increases or decreases the font size.
- Click the **Check table** button to review the signals' configuration.

**NOTE**

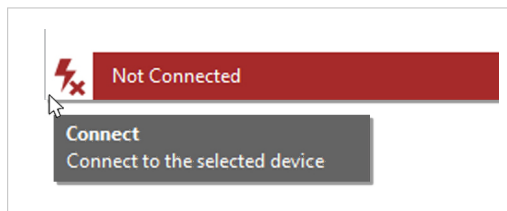
If any parameter on any signal is wrong, a message will pop up with specific information about the error.

6.4. Receive/Send Tab

Send:

Once you have finished setting the parameters, you have to send the configuration to the gateway:

1. Click the **Send** button.
 - a. If the gateway is still factory-set, you will be prompted to save the project on your PC. Once saved, the configuration is automatically sent to the gateway.
 - b. If you have already saved the project, the configuration is automatically sent to the gateway.
2. Connect again with the gateway after sending the file.

**NOTICE**

The gateway reboots automatically once the new configuration is loaded. This process may take a few seconds.

Receive:

Use this function to load the configuration of a gateway to Intesis MAPS.

**TIP**

This function may be helpful when you need to change some parameters of an already configured gateway.

Once the configuration is completed and sent, the gateway is already operative. Even so, you should review that everything works correctly by entering the **Diagnostic** tab.

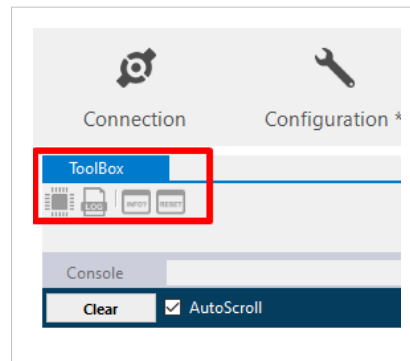
6.5. Diagnostic Tab



IMPORTANT

Connection with the gateway is required to use the diagnostic tools.

ToolBox:



Use the tools section to:

- **Microprocessor icon:** Check the current hardware status of the gateway.
- **LOG:** Set Intesis MAPS in logging mode to record all the information present in the viewers and save it in a .zip file.
- **INFO?:** Get some gateway information.
- **RESET:** Reset the gateway.



NOTE

Depending on your screen resolution, the **ToolBox** icons may appear partially hidden behind the **Viewers** window.

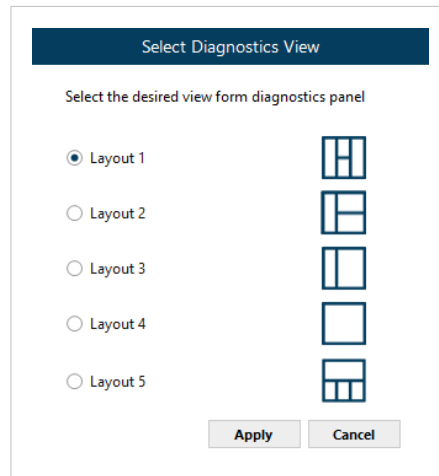
Viewers:



Intesis MAPS provides several viewers:

- A generic console viewer for general information about communications and the gateway status.
- A viewer for both protocols to check their current status.
- A signals viewers to simulate the BMS behavior or check the system's current values.

The layout of these viewers can be modified:

- Using the **Select Diagnostics View** option from the **View** menu:



- Clicking and dragging the border of a viewer. To do so, place the cursor over the edge of a viewer. In the vertical edges, the cursor changes to  to allow the adjustment of the width, and in the horizontal edges, the cursor changes to  to allow the adjustment of the height.

7. BMS Protocols Available

The Intesis IN770AIR***O000 gateway supports Modbus TCP and RTU, KNX, BACnet/IP and MS/TP, and Home Automation. The following sections provide the most relevant information for each one.

7.1. Modbus

7.1.1. Modbus Configuration Tab

The screenshot displays the Intesis MAPS software interface for Modbus configuration. The top navigation bar includes 'Home', 'Project', 'Tools', 'View', and 'Help'. Below this is a secondary navigation bar with icons for 'Connection', 'Configuration', 'Signals', 'Receive / Send', and 'Diagnostic'. The 'Configuration' tab is selected. The main area is titled 'Modbus Configuration' and is organized into sections: 'General' (with 'Modbus Slave' selected), 'Panasonic', and 'Temperature Sensor'. The 'Modbus Configuration' section contains 'Type' (RTU + TCP) and 'Modbus Addresses' (Fixed). The 'TCP Configuration' section contains 'Port' (502) and 'Keep Alive' (10 mins). The 'RTU Configuration' section contains 'Connection Type' (485), 'Baudrate' (9600), 'Data Type' (8bit / None / 1), 'Slave Addressing Mode' (Single Slave selected), and 'Slave Number' (1). The 'Temperature Sensor' section contains a checkbox for 'Ambient temperature provided from Modbus' which is currently disabled.

Figure 10. Modbus configuration parameters

7.1.1.1. Modbus Configuration

- **Type:** Select the communication type.
 - **RTU:** Serial communication over the EIA-485 bus.
 - **TCP:** IP communication over Ethernet.
 - **RTU + TCP:** Simultaneous communication: serial over the EIA-485 bus and IP over Ethernet simultaneously.
- **Modbus Addresses:** Define the type of Modbus register list.
 - **Fixed:** Addresses cannot be modified.
 - **Custom:** The Modbus register list can be freely edited.

7.1.1.2. RTU Configuration

By selecting RTU as the communication type, you can configure:

- **Baudrate:** Select the communication speed: 1200, 2400, 4800, 9600, 19200, 38400, 57600, or 115200 bps.



NOTE

The baudrate is set to 9600 bps by default.

- **Data Type:** Select the frame format (Data bits / Parity / Stop bits).
 - **8bit / None / 1** (default values)
 - **8bit / Even / 1**
 - **8bit / Odd / 1**
 - **8bit / None / 2**
- **Slave Addressing Mode:**
 - Select the **Single Slave** option if you have one single slave.
 - Select the **Multiple Slaves** option if you have multiple slaves.
- **Slave Number:** Set the slave starting address (1 .. 255. Default value: **1**).

7.1.1.3. TCP Configuration

By selecting TCP as the communication type, you can configure:

- **Port:** Set the port for communication between the gateway and the Modbus TCP system (1 .. 65535).



NOTE

The default port is 502.

- **Keep Alive:** Set the time in minutes before sending a keep-alive message (1 .. 1440. Default value: **10 mins**).



NOTE

Set the parameter to 0 to disable this function.

- **Slave Addressing Mode:**
 - Select the **Single Slave** option if you have one single slave.
 - Select the **Multiple Slaves** option if you have multiple slaves.
- **Slave Number:** Set the slave address (1 .. 255. Default value: **1**).

7.1.1.4. Temperature Sensor

- **Ambient temperature provided from Modbus:** Enables the **Modbus ambient temperature (x10)** and **AC Real Temperature Setpoint (x10)** registers, which allow a temperature reference from Modbus to regulate the indoor unit operating temperature.



IMPORTANT

When enabling this function, the gateway uses a formula to establish which temperature it should send to the indoor unit. Consequently, the indoor unit and the Modbus temperature setpoints may differ, and the user won't be able to use any external device, such as a remote controller, to set the AC indoor unit temperature.

The formula applied is:

$$\text{AC Setp. Temp} = \text{AC Real Temp} - (\text{Modbus Amb. Temp.} - \text{Modbus Setp. Temp})$$

Where:

- AC Setp. Temp: AC indoor unit setpoint temperature.
- AC Real Temp: AC indoor unit real temperature.
- Modbus Amb. Temp.: Ambient temperature provided from Modbus.
- Modbus Setp. Temp: Setpoint temperature provided from Modbus.

7.2. KNX

7.2.1. KNX Configuration Tab

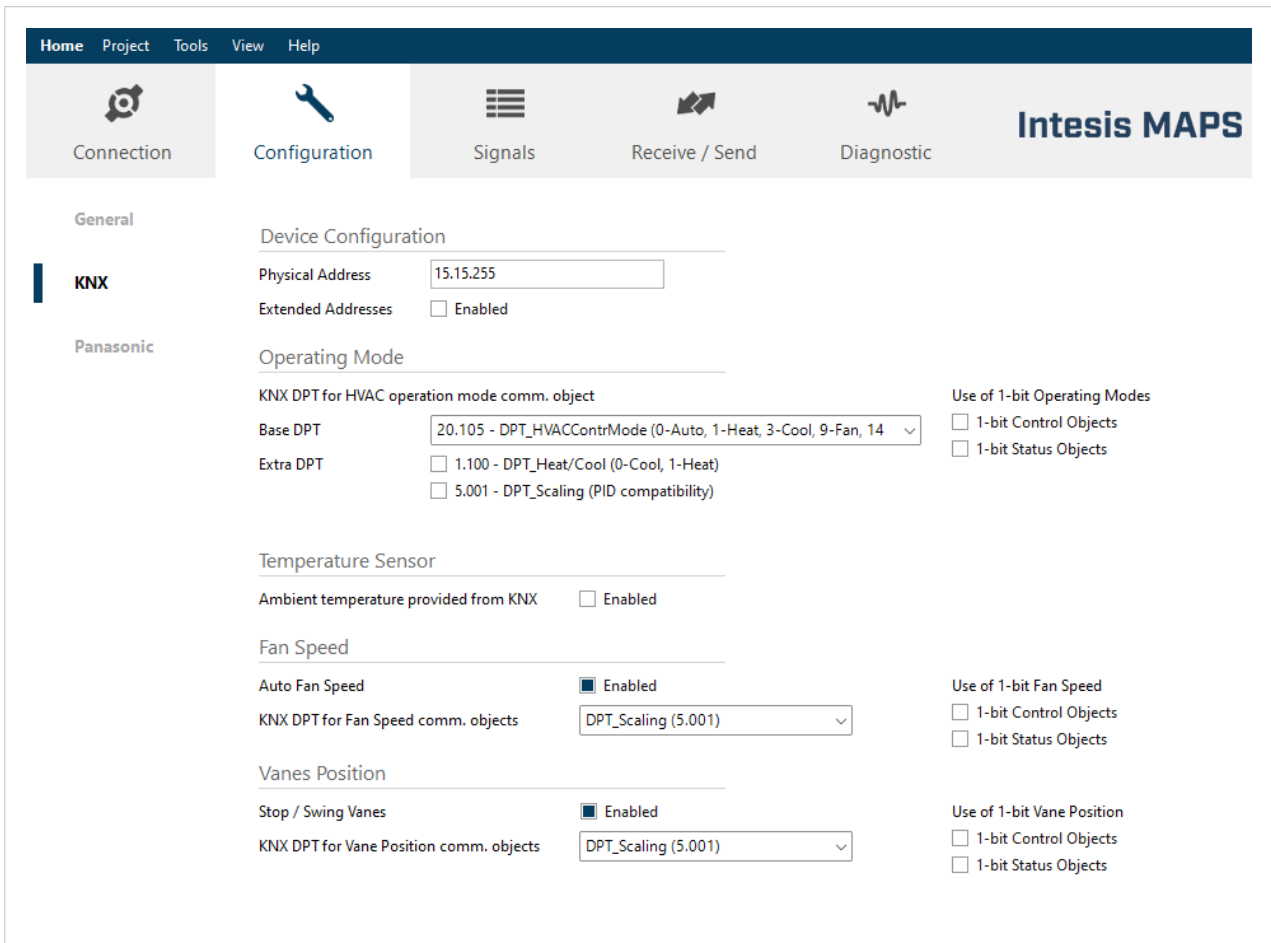


Figure 11. KNX configuration parameters

7.2.1.1. Device Configuration

- **Physical Address:** Sets the gateway's KNX physical address in the network. This is a unique identifier for the gateway inside a single KNX TP-1 segment. The maximum value is 15.15.255 (default).
- **Extended Addresses:** Select it to extend the range of available KNX group addresses from the standard 15/7/255 to 31/7/255.

7.2.1.2. Operating Mode

These parameters are related to the control and monitoring of the AC unit operating mode.

- **KNX DPT for HVAC operation mode comm. object:**
 - **Base DPT:** Datapoint Type to control and monitor the operating mode.
 - DPT_20.105. DPT_HVACContrMode: 0-Auto, 1-Heat, 3-Cool, 9-Fan, 14-Dry.
 - DPT_5.x (non-standardized): 0-Auto, 1-Heat, 2-Dry, 3-Fan, 4-Cool.
 - **Extra DPT:** You can enable these additional Datapoint Types:
 - DPT_1.100. DPT_Heat/Cool: 0-Cool, 1-Heat.
 - DPT_5.001. DPT_Scaling (PID compatibility): It enables two objects: **Control_Heat Mode & On** and **Control_Cool Mode & On**, whose type is DPT_Scaling (0...100%). They provide compatibility with certain thermostats oriented to the operation of valves for heating and cooling. When these objects receive a

value > 0%, the corresponding operating mode (heat or cool) and the status On are sent to the indoor unit. When the value received is 0%, the status sent for the operating mode is Off.

- Use of 1-bit Operating Modes:
 - **1-bit Control Objects:** Enables a bit-type object to control each operating mode.
 - **1-bit Status Objects.** Enables a bit-type object for the monitoring of each operating mode.

7.2.1.3. Temperature Sensor

- **Ambient temperature provided from KNX:** Enables the object **Control_KNX ambient temperature**, which allows a temperature reference from KNX to regulate the indoor unit operating temperature.



IMPORTANT

When enabling this function, the gateway uses a formula to establish which temperature should send to the indoor unit. Consequently, the indoor unit and the KNX temperature setpoints may differ, and the user won't be able to use any external device, such as a remote controller, to set the AC indoor unit temperature.

The formula applied is:

$$\text{AC Setp. Temp} = \text{AC Ret. Temp} - (\text{KNX Amb. Temp.} - \text{KNX Setp. Temp})$$

Where:

- AC Setp. Temp: AC indoor unit setpoint temperature.
- AC Ret. Temp: AC indoor unit return temperature.
- KNX Amb. Temp.: Ambient temperature provided from KNX.
- KNX Setp. Temp: Setpoint temperature provided from KNX.

7.2.1.4. Fan Speed

These parameters are related to the control and monitoring of the AC unit fan speed.

- **Auto Fan Speed:** It enables the Fan Speed AUTO object.
- **KNX DPT for Fan Speed comm. objects:**
 - **DPT_Scaling (5.001):** Percentage values are used to control/monitor the fan speed. Their value will vary according to the number of fan speeds available for the unit.
 - **DPT_Value_1_Ucount (5.010):** Enumerated values are used to control/monitor the fan speed.
- **Use of 1-bit Fan Speed:**
 - **1-bit Control Objects:** Enables a bit-type object to control the fan speed.
 - **1-bit Status Objects:** Enables a bit-type object for the monitoring of each fan speed.

7.2.1.5. Vanes Position

These parameters are related to the control and monitoring of the AC unit vanes position.

- **Auto / Swing Vanes:** It enables Auto and Swing control and monitoring objects.
- **KNX DPT for Vane Position comm. objects:**
 - **DPT_Scaling (5.001):** Percentage values are used to control/monitor the vanes position. Their value will vary according to the number of positions available for the unit.
 - **DPT_Value_1_Ucount (5.010):** Enumerated values are used to control/monitor the vanes position.
- **Use of 1-bit Vane Position:**
 - **1-bit Control Objects:** Enables a bit-type object to control the vanes position.
 - **1-bit Status Objects:** Enables a bit-type object for the monitoring of each vanes position.

7.3. BACnet

7.3.1. BACnet Configuration Tab

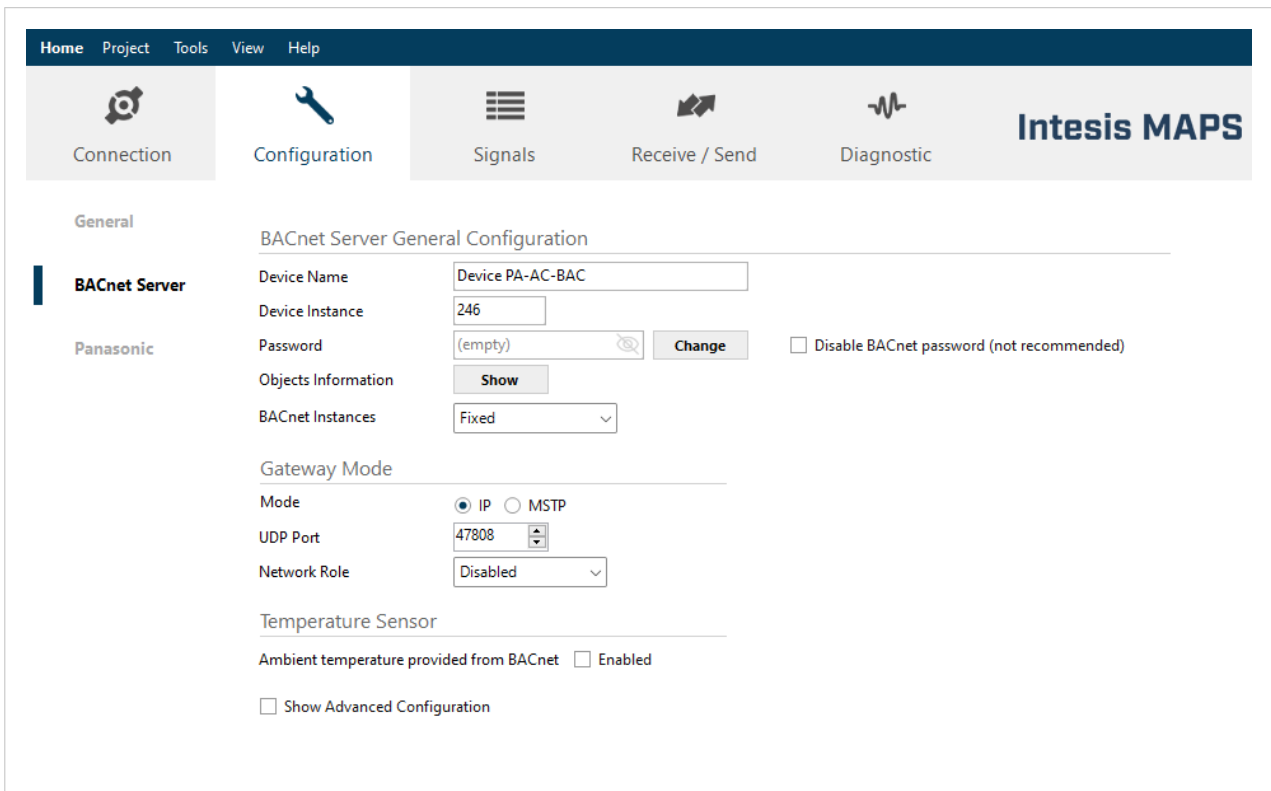


Figure 12. BACnet configuration parameters

7.3.1.1. BACnet Server General Configuration

- **Device Name:** Type a descriptive name for your gateway.
- **Device Instance:** Set the BACnet device object instance property. This is a unique identifier for the gateway inside a single BACnet network segment (0 to 4194302. Default value: **246**).
- **Password:** Click the **Change** button and follow the instructions to set a password for the gateway.
- **Objects Information:** Click **Show** to see a table with the type of objects available.
- **BACnet Instances:** Define the type of BACnet instances.
 - **Fixed:** Instances cannot be modified.
 - **Custom:** The BACnet instances list can be edited.
- **Disable BACnet password (not recommended)** (parameter disabled by default): Disable the BACnet password.



IMPORTANT

Keep the BACnet password enabled to ensure the security of the gateway and the installation.

7.3.1.2. Gateway Mode

- **Mode:** Select the communication type.
 - **IP** (default value): IP communication over Ethernet.
 - **UDP Port:** Select the UDP port for the BACnet/IP communication.



NOTE

The UDP port is set to 47808 (BAC0 in hexadecimal) by default.

- **Network Role** (disabled by default): Define the gateway behavior regarding other network elements.

**IMPORTANT**

If you are unfamiliar with these options, please leave the parameter as **Disabled** to avoid issues with the BACnet communication/configuration.

- **Disabled**: The gateway provides no special service regarding network communication or settings.
 - **Foreign Device**: The gateway acts as a foreign device from the BACnet network point of view.
 - **BBMD**: The gateway acts as a BBMD in the BACnet network.
- **MS/TP**: Serial communication over the EIA-485 bus.
- **Baudrate**: Select the communication speed: Auto, 9600, 19200, 38400, 57600, 76800, or 115200 bps.

**NOTE**

The baudrate is set to Auto by default.

- **Max. Masters**: Set the highest master MAC address in the MS/TP network (1 .. 127. Default value: **127**).
- **Max. Info Frames**: Set the maximum number of messages that can be sent onto MS/TP network per token pass (1 .. 100. Default value: **1**).
- **MAC Address**: Set the MAC address of the gateway in the MS/TP network (0 .. 127. Default value: **1**).

7.3.1.3. Temperature Sensor

- **Ambient temperature provided from BACnet**: Enables the **BACnet ambient temperature** object, which allows a temperature reference from KNX to regulate the indoor unit operating temperature.

**IMPORTANT**

When enabling this function, the gateway uses a formula to establish which temperature it should send to the indoor unit. Consequently, the indoor unit and the BACnet temperature setpoints may differ, and the user won't be able to use any external device, such as a remote controller, to set the AC indoor unit temperature.

The formula applied is:

$$\text{AC Setp. Temp} = \text{AC Ret. Temp} - (\text{BACnet Amb. Temp.} - \text{BACnet Setp. Temp})$$

Where:

- AC Setp. Temp: AC indoor unit setpoint temperature.
- AC Ret. Temp: AC indoor unit return temperature.
- BACnet Amb. Temp.: Ambient temperature provided from BACnet.
- BACnet Setp. Temp: Setpoint temperature provided from BACnet.

7.3.1.4. BACnet Advanced Configuration

Show Advanced Configuration: Open advanced configuration parameters (disabled by default).

**IMPORTANT**

These settings are for advanced users only. We recommend leaving the predetermined configuration.

7.3.1.4.1. Notification Class

Click **Edit** to open the **Notification Class Configuration** parameters.

Figure 13. Notification Class Configuration window

Click the **+** button to create up to ten Notification_Class objects. For each one, you can set:

- **Object Name:** Type a name for the Notification_Class.
- **Object Instance:** Sets the BACnet object instance for the Notification_Class.
- **Recipient List:** Click the **+** button to create eight different BACnet destinations. For each one, you can set:
 - **Destination Name:** Type a descriptive name for the BACnet destination.
 - **Transitions:** Select which transitions will force this Notification_Class to be active:
 - **Off_Normal** (disabled by default): When the status changes from off to normal.
 - **Fault** (disabled by default): When the status changes to fault.
 - **Normal** (disabled by default): When the status changes from fault to normal.
 - **Recipient Type:** Select the type of destination:
 - **Device** (default value): The recipient is a device. Select the device instance number for this device in the **Object Instance** text box.
 - **Address (IP):** The recipient is set using the specific address on BACnet/IP. Specify:
 - **Network Number** (0 .. 65535. Default value: 0).
 - **IP address** (192.168.100.10 by default) and **Port** (47808 by default) for the destination.
 - Set the destination as a **Global Broadcast** (disabled by default).
 - Set the destination as a **Broadcast** (disabled by default).
 - **Address (MS/TP):** The recipient is set using the specific address on BACnet MS/TP. You'll have to specify:
 - **Network Number** (0 .. 65535. Default value: 0).
 - **MS/TP MAC Address** (0 .. 255. Default value: 0).

- Set the destination as a **Global Broadcast** (disabled by default).
- Set the destination as a **Broadcast** (disabled by default).
- **Address (Other):** The recipient is set using another type of address. You'll have to specify:
 - **Network Number** (0 .. 65535. Default value: **0**).
 - **Other Address** (HEX string. Default value: **ff**).
 - Set the destination as a **Global Broadcast** (disabled by default).
 - Set the destination as a **Broadcast** (disabled by default).
- **BACDestination Advanced Options** (disabled by default): Check this option to show some advanced options.
 - **Valid days:** Sets the days for receiving the notification.
 - **From:** Sets the starting point for the valid period.
 - **To:** Sets the ending point for the valid period.
 - **Issue Confirmed Notifications** (disabled by default): Determines if notification events are sent as Confirmed or Unconfirmed to the BACnet destination.



IMPORTANT

Sending them as Confirmed requires Ack.

- **Notification Class Advanced Options** (disabled by default): Check this option to show the **Ack Required** options.
 - **Off_Normal** (disabled by default): Enable the acknowledgment for the TO_OFF_NORMAL event.
 - **Fault** (disabled by default): Enable the acknowledgment for the TO_FAULT event.
 - **Normal** (disabled by default): Enable the acknowledgment for the TO_NORMAL event.

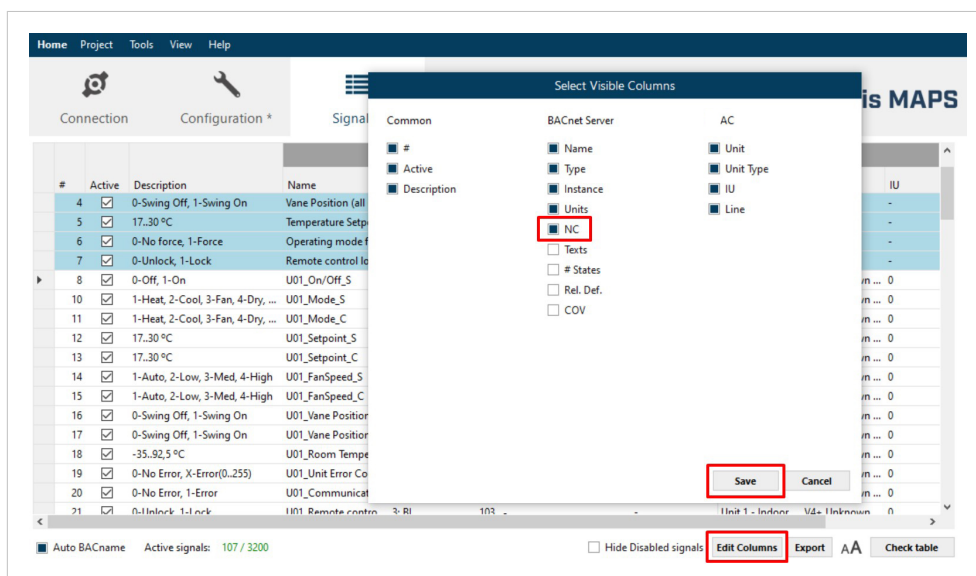


NOTE

Set the priority for each parameter (0 .. 255. Default value: **140**).

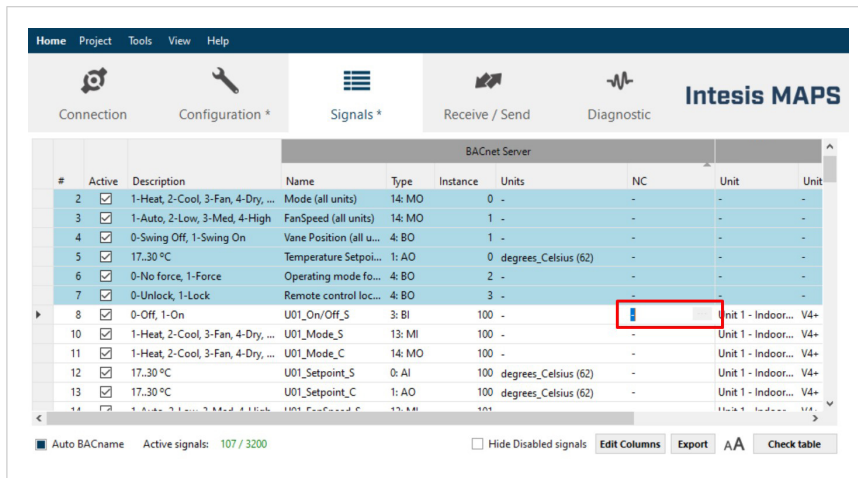
Once you have created and configured the needed Notification_Class objects, the next step is to assign them to signals:

1. Go to the **Signals** tab.
2. Click the **Edit Columns** button from the bottom menu.

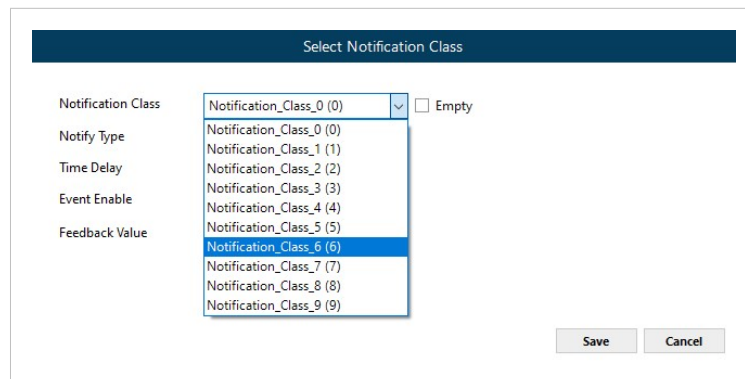


3. In the **Select Visible Columns** window, check **NC**.

4. Click **Save**.
A new column named **NC** is now visible.
5. Look for the signal to which you want to assign the Notification_Class object and click the corresponding cell in the NC column.



6. Click the **...** button.
7. In the **Select Notification Class** window, uncheck the **Empty** parameter.
8. Use the dropdown menu to select the Notification_Class object.



9. Set the rest of the parameters:

**NOTE**

These parameters vary depending on the signal type.

- **Notify Type:** Choose if the notification is sent as an **Alarm** (default) or an **Event**.
- **Time Delay:** Set the time in seconds before launching the notification (0 .. 65535. Default value: **0 seconds**).
- **Event Enable:** Click in the field to enable/disable the following options:
 - **TO_OFF_NORMAL** (enabled by default): Enable/disable the TO_OFF_NORMAL event.
 - **TO_FAULT** (enabled by default): Enable/disable the TO_FAULT event.
 - **TO_NORMAL** (enabled by default): Enable/disable the TO_NORMAL event.
- **Initial Feedback Value:** Set the initial feedback value (1.. 5. Default value: **2**)
- **Alarm Value:** Choose if the alarm value is **Active** or **Inactive** (default).
- **Alarm Value LUT:** Set an alarm value look-up table collection (use commas to separate values).
- **Feedback Value:** Choose if the feedback value is **Active** or **Inactive** (default).
- **High Limit** (Disabled by default): Enable this parameter to set the high limit for the notification.
- **Low Limit** (Disabled by default): Enable this parameter to set the low limit for the notification (0.00 .. 999.00).
- **Deadband:** Set the deadband for the notification.

10. Click **Save** to save the changes.

Once assigned, the instance number of the Notification_Class object appears in the **NC** column.

| # | Active | Description | Name | Type | Instance | Units | NC | Unit | Unit |
|----|-------------------------------------|-----------------------------------|-------------------------|--------|----------|----------------------|----|--------------------|------|
| 4 | <input checked="" type="checkbox"/> | 0-Swing Off, 1-Swing On | Vane Position (all u... | 4: BO | 1 | - | - | - | - |
| 5 | <input checked="" type="checkbox"/> | 17.30 °C | Temperature Setpoi... | 1: AO | 0 | degrees_Celsius (62) | - | - | - |
| 6 | <input checked="" type="checkbox"/> | 0-No force, 1-Force | Operating mode fo... | 4: BO | 2 | - | - | - | - |
| 7 | <input checked="" type="checkbox"/> | 0-Unlock, 1-Lock | Remote control Mo... | 4: BO | 3 | - | - | - | - |
| 8 | <input checked="" type="checkbox"/> | 0-Off, 1-On | U01_On/Off_S | 3: BI | 100 | - | 6 | Unit 1 - Indoor... | V4+ |
| 10 | <input checked="" type="checkbox"/> | 1-Heat, 2-Cool, 3-Fan, 4-Dry, ... | U01_Mode_S | 13: MI | 100 | - | - | Unit 1 - Indoor... | V4+ |
| 11 | <input checked="" type="checkbox"/> | 1-Heat, 2-Cool, 3-Fan, 4-Dry, ... | U01_Mode_C | 14: MO | 100 | - | - | Unit 1 - Indoor... | V4+ |
| 12 | <input checked="" type="checkbox"/> | 17.30 °C | U01_Setpoint_S | 0: AI | 100 | degrees_Celsius (62) | - | Unit 1 - Indoor... | V4+ |
| 13 | <input checked="" type="checkbox"/> | 17.30 °C | U01_Setpoint_C | 1: AO | 100 | degrees_Celsius (62) | - | Unit 1 - Indoor... | V4+ |
| 14 | <input checked="" type="checkbox"/> | 1-Auto, 2-Low, 3-Med, 4-High | U01_FanSpeed_S | 13: MI | 101 | - | - | Unit 1 - Indoor... | V4+ |
| 15 | <input checked="" type="checkbox"/> | 1-Auto, 2-Low, 3-Med, 4-High | U01_FanSpeed_C | 14: MO | 101 | - | - | Unit 1 - Indoor... | V4+ |

7.3.1.4.2. Calendars

Click **Edit** to open the **Calendars Configuration** parameters.

Figure 14. Calendars Configuration window

Click the **+** button to create up to ten calendars. For each one, you can set:

- **Object Name:** Type a name for this BACnet object.
- **Object Instance:** Set the BACnet object instance for the calendar (0 .. 4194303. Default value: 0).
- **Calendar Entries:** Click the **+** button to determine the number of calendar entries (patterns). Create up to 32 different entries per calendar. For each entry, you can set:
 - **Entry Name:** Type the calendar entry name.
 - **Type:** Set the date type for the calendar:
 - **Date** (default value): To select a single day.
 - **Date Range:** To select a date range. Set the starting day (**From**) and the ending day (**To**).
 - **Week N Day:** To set the date by selecting a **Month**, a **Week of the Month**, and/or a **Day of the Week**.



NOTE

Select an asterisk (*) to apply the rule to all cases.

7.3.1.4.3. Schedules

Click **Edit** to open the **Schedules Configuration** parameters.

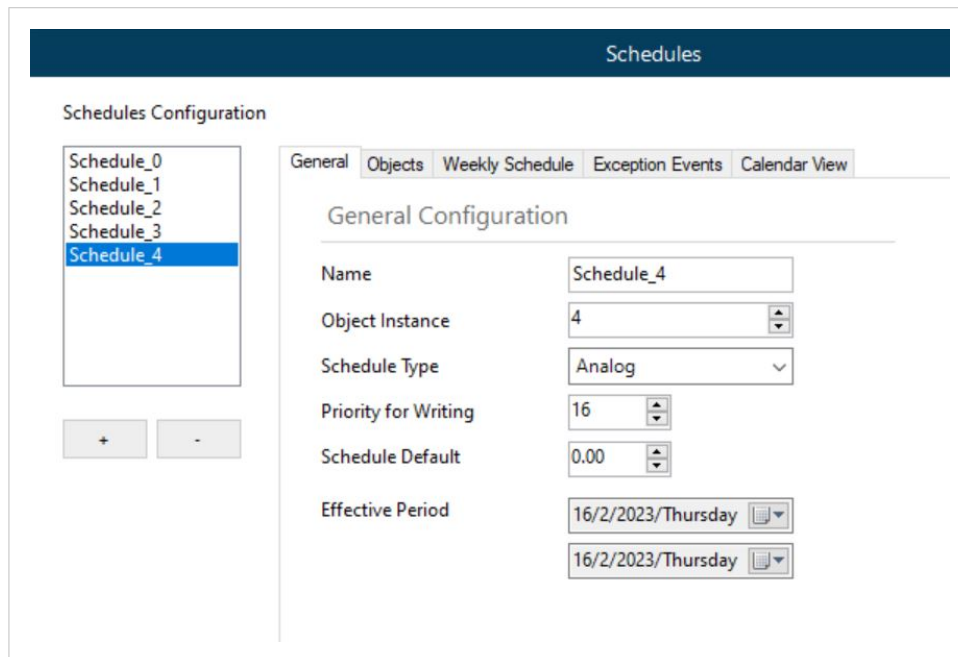


Figure 15. Schedules Configuration window

Click the **+** button to create up to ten schedules. For each one, you can set:

- **General Configuration:**
 - **Name:** Type a name for this BACnet object.
 - **Object Instance:** Set the BACnet object instance for the schedule (0 .. 4194303. Default value: **0**).
 - **Schedule Type:** Set it as an **Analog** (default), **Binary**, or **Multistate** object.
 - **Priority for Writing:** Select the writing priority of the schedule value (1 .. 16. Default value: **16**).
 - **Schedule Default:** Set the default value for the schedule (0.00 .. 65535.00. Default value: **0.00**).
 - **Effective Period:** Sets the starting and ending day of the effective period.

- **Objects Configuration:** Include BACnet objects in a specific schedule.

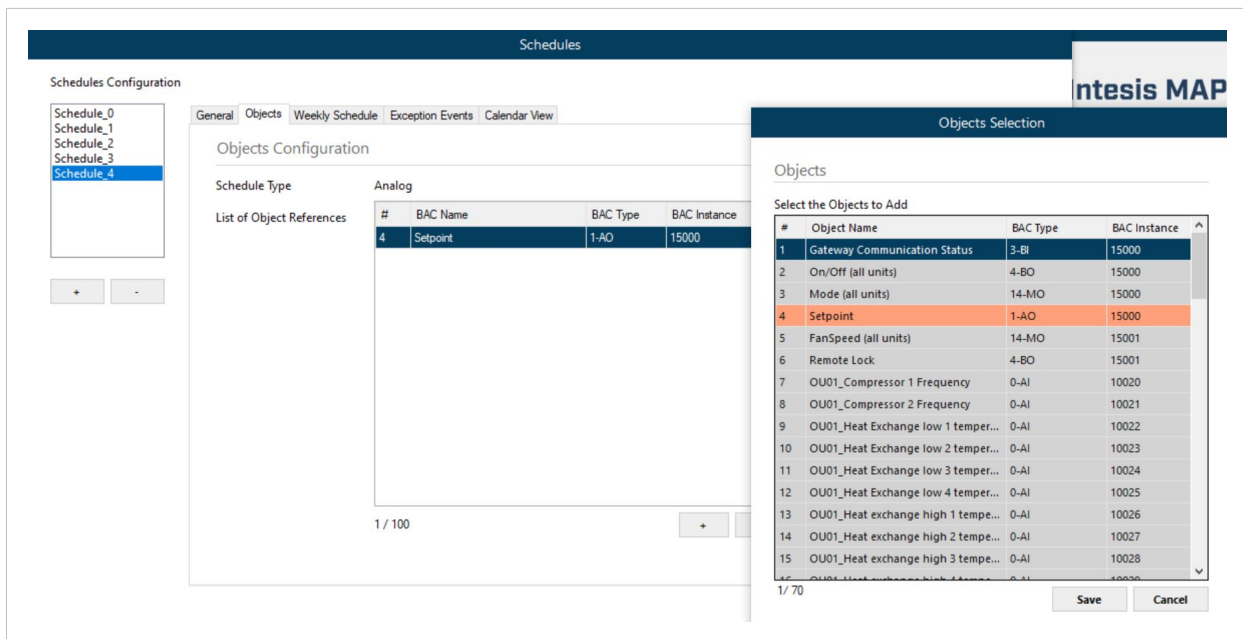


Figure 16. Objects Configuration window

- **Schedule Type:** It shows the previous **Schedule Type** object you selected: Analog, Binary, or Multistate.
- **List of Object References:** Click the + button to open the **Objects Selection window**, where the available objects are listed. Select the object and click **Save** to add it.

- **Weekly Schedule Configuration:**

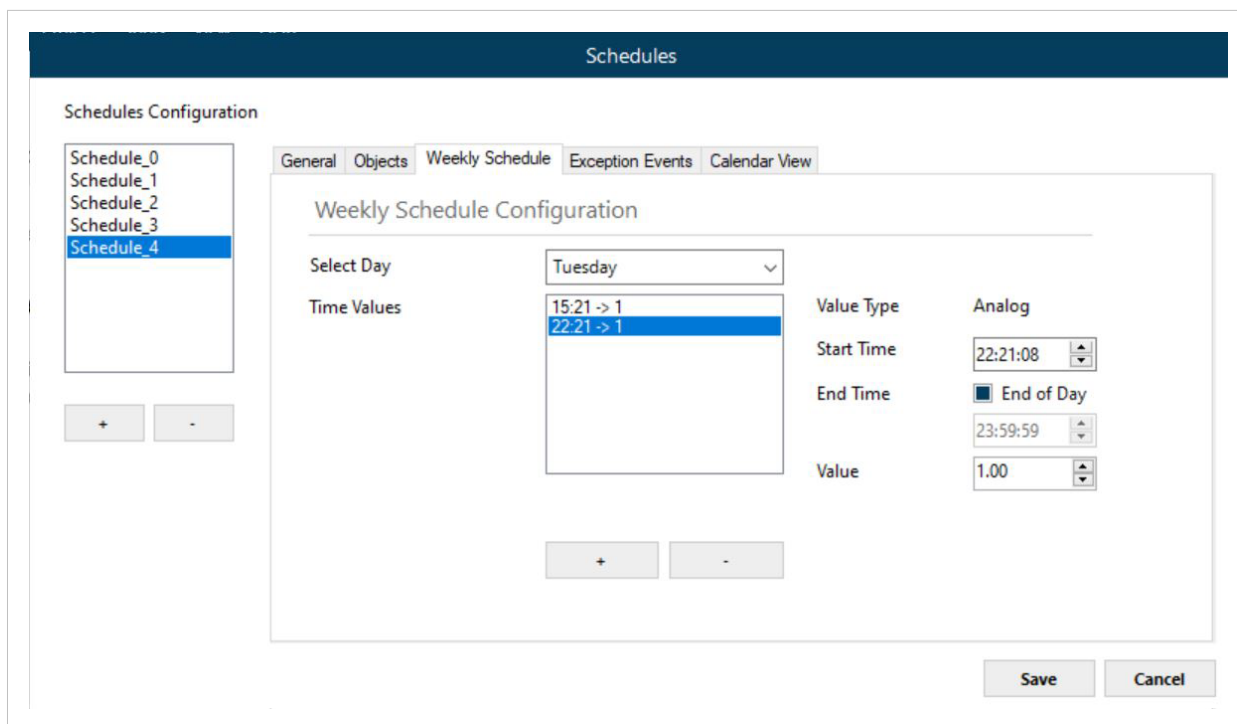


Figure 17. Weekly Schedule Configuration window

- **Select Day:** Select which day(s) of the week the schedule applies.
- **Time Values:** Click the **+** button to create up to six time periods. For each one, set the **Starting Time**, the **End Time**, and the **Value**.

- **Exception Events Configuration:** Create exceptions to the schedules.

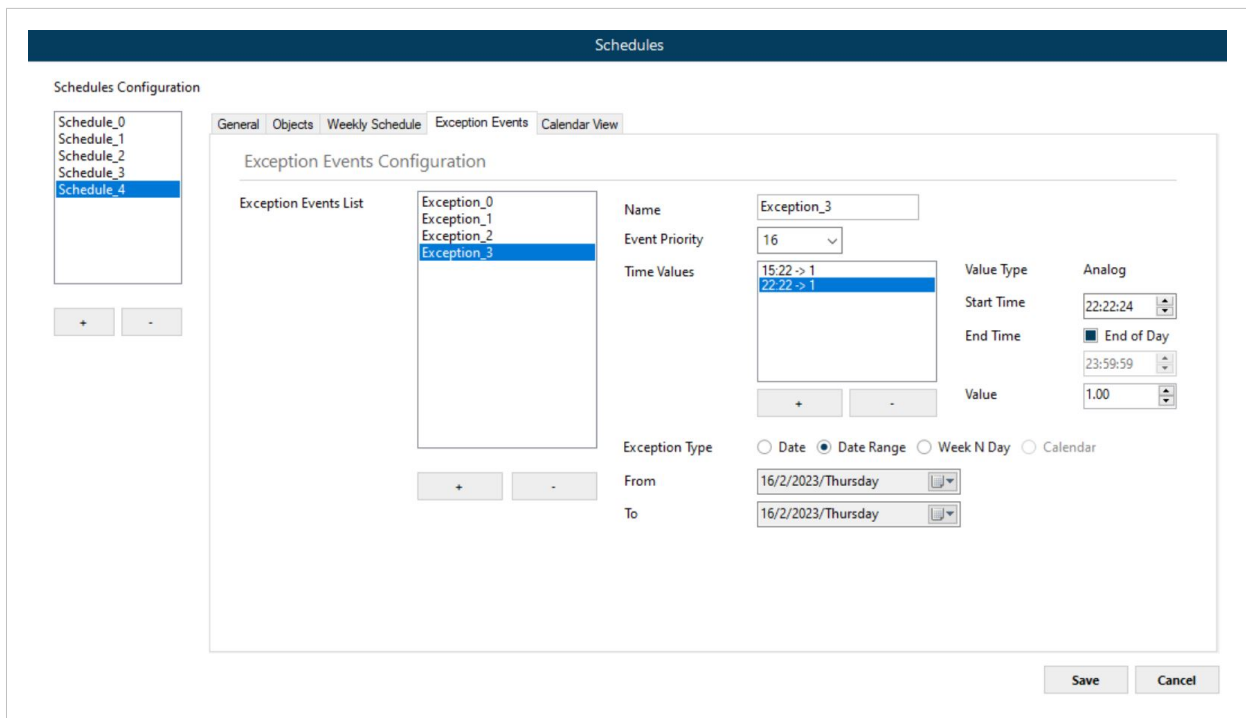




Figure 18. Exception Events Configuration window

- **Exception Events List:** Click the **+** button to create up to 16 different exceptions. For each one, you can set:
 - **Name:** Type a name for the exception.
 - **Event Priority:** Set a priority for the exception (1 [maximum priority] .. 16 [minimum priority]. Default value: 16).
 - **Time Values:** Click the **+** button to can create up to six time periods. For each one, set the **Starting Time**, the **End Time**, and the **Value**.
 - **Exception Type:** Set the type of date for the exception:
 - **Date** (default): Select a single day.
 - **Date Range:** Select a date range. Set the starting day (**From**) and the ending day (**To**).
 - **Week N Day:** Set the date by selecting a **Month**, a **Week of the Month**, and/or a **Day of the Week**.

 **NOTE**
Select an asterisk (*) to apply the rule to all cases.

- **Calendar:** Select a Calendar to apply its values to the exception event.

 **NOTE**
This option is only enabled when at least a Calendar has been created.

- **Calendar View:** Display a Calendar to consult all the configured schedules.

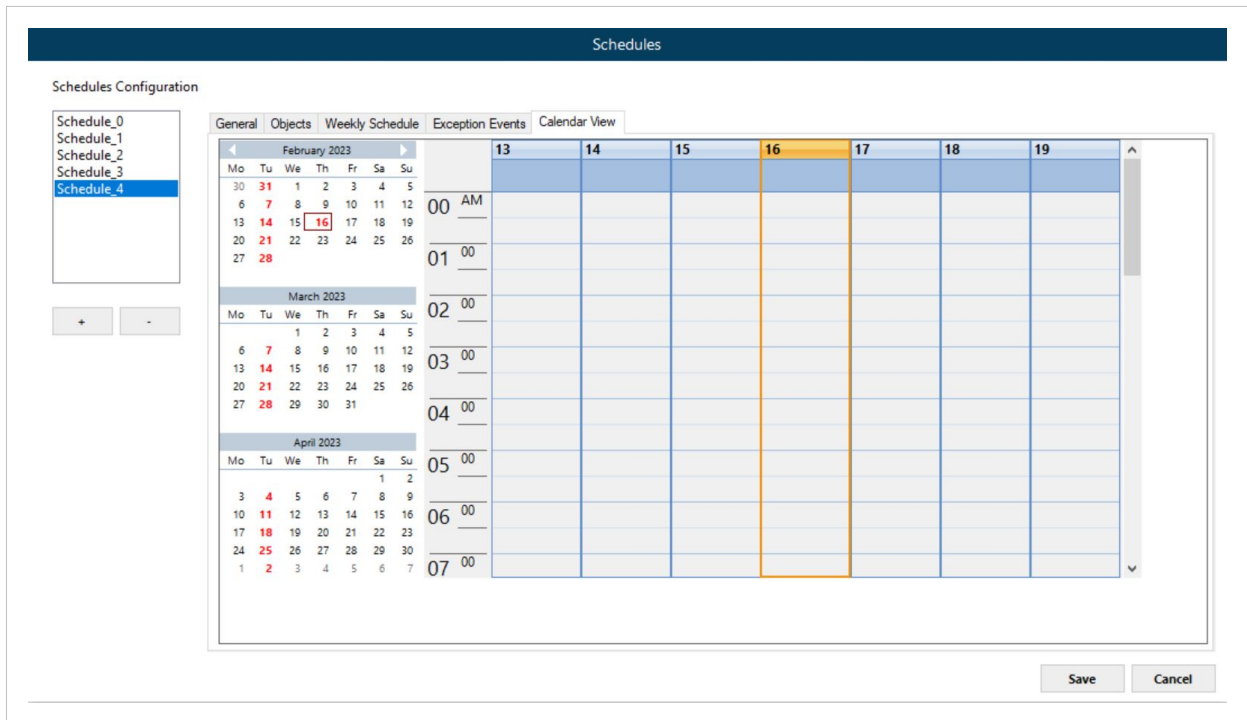


Figure 19. Calendar window

7.3.1.4.4. Trend Logs

Click **Edit** to open the **Trend Logs** parameters.

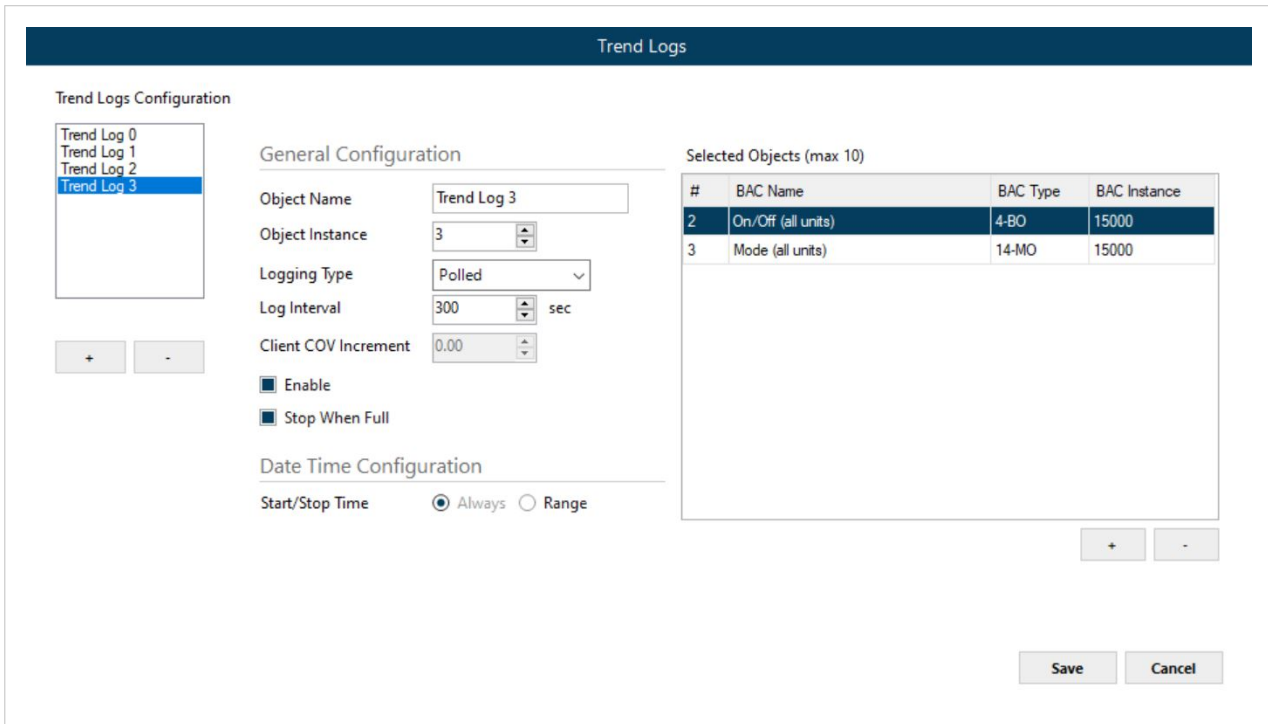


Figure 20. Trend Logs Configuration window

Click the **+** button to create up to five trend logs. For each one, you can set:

- **Object Name:** Type a name for the trend log.
- **Object Instance:** Set the BACnet object instance for the trend log (0 .. 4194303. Default value: **0**).
- **Logging Type:** Select the trend log type:
 - **Polled** (default value): The trend log is triggered when polling.
Use the **Log Interval** parameter to set the poll cadence in seconds (1 .. 65535. Default value: **300 sec**).
 - **COV:** The trend log is triggered when there is a change of value.
Use the **Client COV Increment** parameter to set (0.00 .. 100000.00. Default value: **0.00**).
 - **Triggered:** The trend log is triggered by the BACnet system.
- **Enable** (enabled by default): Enable or disable the specific trend log even if the trend log is in the valid time range.
- **Stop When Full** (enabled by default): If **enabled**, it will stop the trend log when the buffer is full. If **disabled**, it will keep the last 2880 valid values.
- **Date Time Configuration:** Set the period when trend logs are active.
 - **Always** (default value).
 - **Range:** Use the **Start Time** and **End Time** parameters to set a time range.

- **Selected Objects (max 10):** Click the **+** button to include up to ten BACnet objects in a trend log.

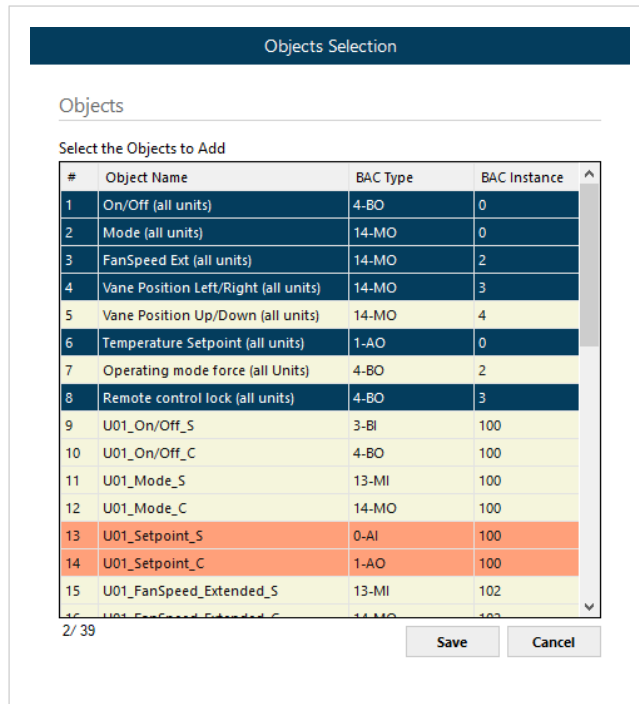


Figure 21. BACnet Objects Selection



NOTE

To select multiple items in both the **Selected Objects** and the **Objects Selection** tables, press and hold the **Shift** key when clicking for consecutive objects or the **Control** key for non-consecutive objects. Objects already added are shown with an orange background.

7.4. Home Automation

7.4.1. Home Automation Configuration Tab

The screenshot shows the Intesis MAPS software interface. At the top, there is a navigation bar with 'Home', 'Project', 'Tools', 'View', and 'Help'. Below this is a toolbar with icons for 'Connection', 'Configuration', 'Signals', 'Receive / Send', and 'Diagnostic'. The 'Configuration' tab is active, showing a sidebar with 'General', 'WMP', and 'Panasonic'. The main content area is titled 'Available Commands' and contains a table with the following data:

| Command | Description |
|----------|--------------------------------------|
| ID | Device ID |
| INFO | Device Info |
| DISCOVER | Device discovering via UDP |
| PING | Ping to device |
| STATUS | Unit status in one string |
| LIMITS | Current limits for different signals |

Below the table is the 'TCP Configuration' section, which includes two input fields: 'Port' set to 3310 and 'Keep Alive' set to 10 mins.

Figure 22. Home Automation configuration parameters

7.4.1.1. Available Commands

This informative section displays all commands available for communication between the gateway and the Home Automation system:

- ID, INFO, DISCOVER, PING, STATUS, and LIMITS.

7.4.1.2. TCP Configuration

- **Port:** You can set the TCP port for the communication between the gateway and the Home Automation system.



NOTE

The default port is 3310.

- **Keep Alive:** Set the time in minutes before sending a keep-alive message (1 .. 140. Default value: **10 min**).



NOTE

Set the parameter to 0 to disable this function.

8. Late Configuration: Change the Gateway's Protocol

Reconfiguring the gateway with a different protocol is very easy:

1. Connect the gateway to the PC and open the configuration tool Intesis MAPS.
2. Select the new template you need.
3. Click **Next** or double-click the template in the list.
4. A message will pop up, asking if you want to save the project currently loaded in the gateway.
5. Click **Yes** or **No**, depending on your needs.
6. Configure the needed parameters and signals for your new project.
7. Send the configuration to the gateway.



NOTE

The configuration tool will indicate if new firmware is needed, and you'll just have to download it from Intesis MAPS.